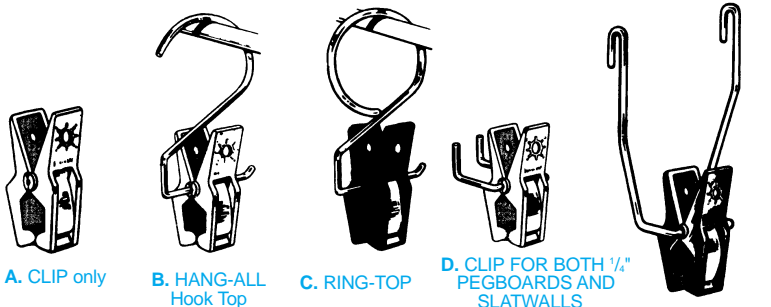


Famous Hercules Hang-Alls

Solve Hundreds of Hanging Problems!

Jaws open wide, never lose their grip! Can't break, tarnish, rust, or damage! Hang anything... loose or packaged.



A. CLIP only

B. HANG-ALL Hook Top

C. RING-TOP

D. CLIP FOR BOTH 1/4\"/>

E. GRID PANEL CLIP Chrome Metal Hook

A. CLIP ONLY

White HC100 } 5000 — [Call]
 Black HC101 } 1000 — [Call]
 100 — [Call]

B. HANG-ALL

White HA100 } 5000 — [Call]
 Black HA101 } 1000 — [Call]
 100 — [Call]

C. RING-TOP

White HR100 } 5000 — [Call]
 Black HR101 } 1000 — [Call]
 100 — [Call]

D. CLIP FOR BOTH 1/4\"/>

White HS100 } 1 dozen — [Call]
 Black HS101 }

E. GRID PANEL CLIP

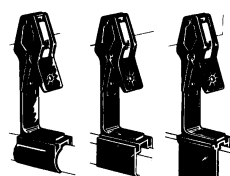
White HG100 } 1 dozen — [Call]
 Black HG101 }

Prices are per 100, packed 100 of a kind & color to a carton. Sold in full carton lots only. NOTE: HG and HS clips sold by dozen.

Snap-On Sign Holders

Ideal for Warehouse Stock and Inventory Control or your Outlet Store. Snap on & off any hangrail with a single push-pull! Display signs of any size, shape or material — in any position!

JET-BLACK ROTO -CLIPS



U.S. Patents #3456262 #0212444

Clip Rotates to face front back or either side

FOR ROUND HANGRAILS

FOR SQUARE HANGRAILS

FOR RECTANGULAR HANGRAILS

CALL FOR PRICES

- For 1" Diam. Round Hangrails (Fits Rails 7/8" thru 1 1/8" Diam.) ("Fits most Slickrail Trolleys) #HB101 —00 or more, can be assorted
- For 1/4" Diam. Round Hangrails (Fits Rails 13/16" thru 1 1/2" Diam.) (Fits most Storage Rails) #HB101X —00 or more, can be assorted
- For 1" Square Hangrails (Fits 1" Square Rails only) #HB 101Z — (less than 100 — 12 minimum)
- For 1/2" x 1 1/2" Rectangular Hangrails #HB 101W —100 or more, can be assorted; less than 100 — 12 minimum

Styles can be assorted

HANGING GARMENT REACHING ROD

Use every inch of available space! Makes merchandise accessible! **H198** — 54" long also #22GP84 - 84" long with metal handle - 96" long

new

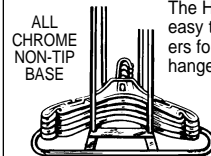
[Call]

- Durable chrome plated steel
- Easy-grip Wooden Handle

Call for prices

They slide along rod at fingertip touch without losing their grip

HEAVY DUTY HANGER STACKERS

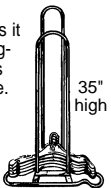


ALL CHROME NON-TIP BASE

The Hanger Stackers makes it easy to organize your hangers for future re-use. Holds hangers of any kind or size.

Hanger Stacker (H197)

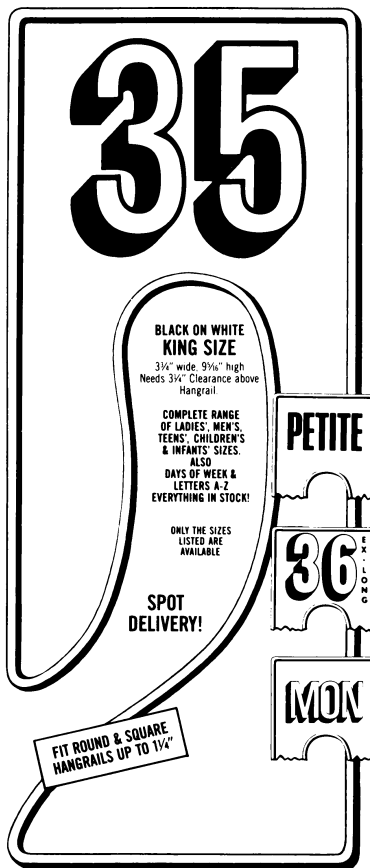
Call for price



35" high

Giant Size Dividers — Warehouse or Outlet Store - Order Form

IN STOCK! SPOT DELIVERY!



Round Size Dividers: D2 Black on White D2G Gold on Black
 Queen Size Dividers: D1 Black on White D1G Gold on Black

0	1	1X	2	2X	3	3X	4	4X	5
6	6X	6 1/2	7	8	8 1/2	9	10	10 1/2	11
12	12 1/2	13	14	14 1/2	15	15 1/2	16	16 1/2	17
17 1/2	18	18 1/2	19	20	20 1/2	21	22	22 1/2	23
24	24 1/2	25	26	26 1/2	27	28	28 1/2	29	30
30 1/2	31	32	32 1/2	33	34	35	36	37	38
39	40	41	42	43	44	45	46	47	48
49	50	51	52	53	54	55	56	57	58
59	60	Small	Medium	Large	XS	XL	XXL	XXXL	XXXXL
Petite	Newborn	Infant	Toddler	Regular	Husky	Slim	Tall	Short	Average
Long	3P	4P	5P	6P	7P	8P	9P	10P	11P
12P	13P	14P	15P	16P	17P	18P	20P	3-4	5-6
7-8	9-10	11-12	13-14	15-16	17-18	3 Mo	6 Mo	9 Mo	12 Mo
18 Mo	24 Mo	30 Mo	36 Mo	1T	2T	3T	4T	Blank	

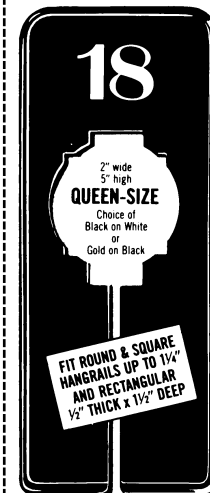
Days, Mon-Sat. (Black on White Only) Alphabet, A-Z (Black on White Only)
 Sets D4 Round Sets D3 Round Sets D9 Queen Size
 Sets D8 Queen Size D15 KING SIZE DIVIDERS Black on White

0	1	2	3	3X	4	5	6	6X	6 1/2
7	8	8 1/2	9	10	10 1/2	11	12	12 1/2	13
14	14 1/2	15	15 1/2	16	16 1/2	17	17 1/2	18	18 1/2
19	20	20 1/2	21	22	22 1/2	23	24	24 1/2	25
26	26 1/2	27	28	28 1/2	29	30	30 1/2	31	32
32 1/2	33	34	35	36	37	38	39	40	41
42	43	44	45	46	47	48	49	50	51
52	53	54	55	56	57	58	59	60	Small
Medium	Large	XS	XL	XXL	Petite	Newborn	Infant	Regular	Husky
Slim	Tall	Short	Average	Long	Junior Miss	Junior Petite	Toddler Girl	Toddler Boy	Girls 3-6X
Girls 7-14	3P	4P	5P	6P	7P	8P	9P	10P	11P
12P	13P	14P	15P	16P	17P	18P	20P	5-6	7-8
9-10	11-12	13-14	15-16	3 Mo	6 Mo	9 Mo	12 Mo	18 Mo	24 Mo
30 Mo	36 Mo	1T	2T	3T	4T	Blank			

Also available men's sizes 34 thru 50 additionally printed REG., SHORT, LONG, EXTRA-LONG, i.e., 34 REG, 34 SHORT, 34 LONG, etc.

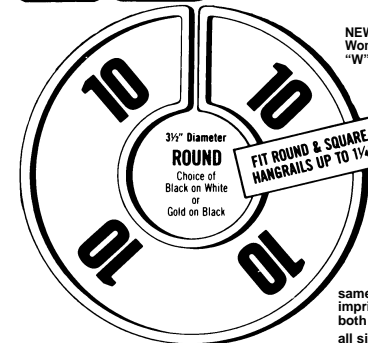
Sets D16 Alphabet A-Z Sets D17 Days, Mon-Sat.

Top Quality Size Dividers!



- 3 POPULAR STYLES
- ALL SIZES INCLUDING NEW "W" SERIES
- CAN'T BREAK
- CAN'T FALL OFF
- SIZE ALWAYS VISIBLE
- BEAD EDGE RETAINS DIVIDER RIGIDITY
- Special Price Break On Full Box lots of 100 of a Size

D1 - BLACK ON WHITE FULL BOXES
 100 of a size to a box. Broken Boxes available
 D8 - Letters A-Z
 D9 - Days Mon-Sat.
 CALL FOR PRICES
 D1G - GOLD ON BLACK FULL BOXES
 100 of a size to a box. Broken boxes available



NEW Women's "W" Sizes

same imprint on both sides all sizes in stock

Picking and Packing Assorted Sizes Run High, The Full Box Price Reflects The Saving!

D2 BLACK ON WHITE \$0.16 each, FULL BOXES 100 of a size to a box. Broken boxes, 26¢ each.
 D2G GOLD ON BLACK \$0.19 each, FULL BOXES 100 of a size to a box. Broken boxes, 29¢ each.

BLACK ON WHITE ONLY } D3 - Letters of Alphabet A-Z \$9.50 set
 D4 - Days of Week Mon-Sat \$4.75 set
 Orders under \$35, \$5.00 Handling Charge

D15 BLACK ON WHITE Call for Prices, FULL BOXES D16 Letters A-Z [Call]
 Set 100 of a size to a box Broken Boxes available
 D17 Days Mon-Sat. [Call]

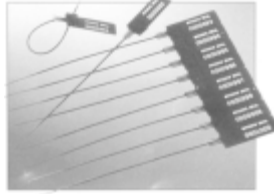
PICKING AND PACKING ASSORTED SIZES RUN HIGH, THE FULL BOX PRICE REFLECTS THE SAVING!

Single Use Security Seals for Totes, Reusable Shipping Containers, Transfer Pouches and Truck or Cart Doors

- Easy to Use
- Deter Fraud
- Reduce Theft

Secur™-Pull Seals

were specially designed for easy installation without tools for applications, including: tote bins, fiber drums, and transfer pouches. It is made of strong engineered plastic, and features a looped pull strength of 35 - 45 pounds. Secur-Pull Seals can be heat stamped with your company name and/or logo and are consecutively numbered for identification and tracking purposes. They are available in a variety of colors in mats of 10 units each.



Choice of Colors: Red, Green, Blue, Yellow and Dark Blue

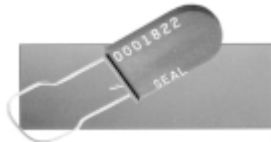
- No charge for seven digit consecutive numbering
- Bar coded seals (paper labels) are available in Interleaved 2 of 5, Code 39 and Code 128 symbologies
- Vinyl labels are available as a special order.

Product Number	Heat Stamping	Strap Length	Color Options	Price per 1,000			
				1,000	5,000	10,000	25,000
6581107	Custom*	7"	Choice	----- Please Call For Prices -----			

*One time stamp charge plus initial charge per character Patent No.: 5,524,945

Plastic Padlock Seals

have a polypropylene body and are available in a choice of galvanized or stainless steel hasps. Scored hasps facilitate removal. They can be consecutively heat stamped with alphanumeric characters as well as logo designs.



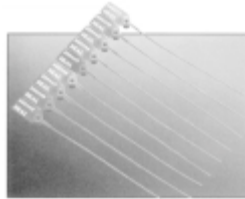
Choice of Colors: Red, Orange, Blue, Black, White, Yellow

Product Number	Hasp Material	Heat Stamping	Color Options	Price per 1,000			
				1,000	2,000	5,000	10,000
6170000	Galvanized	Custom*	Choice	----- Please Call For Prices -----			
6180000	Stainless	Custom*	Choice	----- Please Call For Prices -----			

*One time stamp charge plus initial charge per character Patent Nos.: 4,254,977, 4,687,240

Pull-Tite II™

is a one-piece seal made of durable, weather resistant nylon. It is easily installed and removed without tools and features a double wall locking chamber which resembles a double dome design. The inner dome performs the actual locking while the outer dome protects against tampering attempts. Pull-Tite II seals are supplied in 10-unit mat forms to facilitate inventory control, recording, storage and distribution in serial number sequence.



Choice of Colors: Black, White, Yellow, Blue and Red.

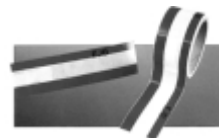
Product Number	Body Material	Heat Stamping	Color Options	Price per 1,000				
				1,000	2,000	5,000	10,000	30,000
6690000	Nylon	Stock*	Blue	----- Please Call For Prices -----				
6690000	Nylon	Custom*	Choice	----- Please Call For Prices -----				

*One time stamp charge plus initial charge per character Patent Nos.: 3,830,538, 4,697,833

- **Stock:** consecutively numbered in Blue only
- **Custom:** custom imprinted text and/or numbering in choice of colors.

Superseal™

is a tamper indicating tape that reveals the word "OPENED" if an attempt is made to remove the seal. Superseal is a red polyester void feature material with a white center section that is printed with red micro-encapsulated inks; imprinted in blue; 2" x 7" seals; roll size is 2" x 292' with 500 seals/roll. Freon has no effect on the adhesive seal.

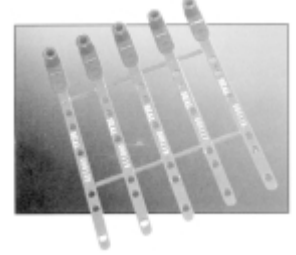


Stock seals are imprinted with the letters **EJB**

Product Number	Price Per Roll
9170011-1	CALL

Adjust-A-Seal™

has built-in flexibility and security. It provides a variable cinch mechanism to allow users to adjust for the ideal length. This polypropylene seal is self-locking, requiring no tools for application or removal. Available in a choice of colors, it is supplied in 10 unit mats and can be heat stamped with consecutive numbering.

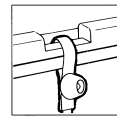


Choice of Colors: Blue, Red and Green

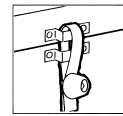
- Stock: seven digit consecutive numbering at no charge
- Personalized seals with up to four (4) characters available



Securing the Neck of a Bag



Sealing Tote Box Cover



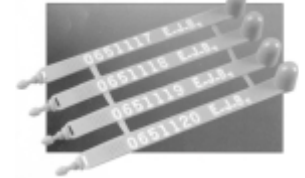
Securing A Latch

Product Number	Heat Stamping	Color Options	Price per 1,000			
			1,000	2,000	5,000	10,000
6900000	None	Choice	----- Please Call For Prices -----			
6910000	Custom*	Choice	----- Please Call For Prices -----			
6915000	Stock	Blue	----- Please Call For Prices -----			

*One time stamp charge plus initial charge per character Patent No:4,441,233

Poly-Lok II™

features a solid dome and four locking legs to reveal the slightest tampering attempts. The seals are supplied 10 seals per mat for easy distribution in serial number sequence and are available in 5", 7 1/2" and 10" lengths. They can be embossed and numbered on any of their 8 colors.



Choice of Colors: Red, Green, Blue, Maroon, Orange, Yellow, Black & Gray.

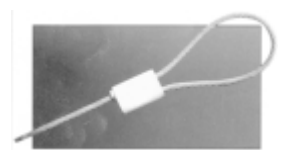
- No charge for lettering and numbering
- 7 1/2" and 10" seals allow for up to 17 letters and seven digits
- 5" seals allow for up to 4 letters and seven digits

Product Number	Color	Length	Price per 1,000				
			500	1,000	2,000	5,000	10,000
6260005*	Blue/Stock	5"	----- Please Call For Prices -----				
6260075*	Blue/Stock	7 1/2"	----- Please Call For Prices -----				
6260010*	Blue/Stock	10"	----- Please Call For Prices -----				
6261005	Choice	5"	----- Please Call For Prices -----				
6261075	Choice	7 1/2"	----- Please Call For Prices -----				
6261010	Choice	10"	----- Please Call For Prices -----				


*Stock seals embossed E.J.B. (5") or Brooks Seal (7 1/2" & 10") Patented Nos. 4,059,300, 4,588,218

Multi-Lok®

is a high security disposable cable seal available in a choice of 1/8" or a 1/16" diameter, braided steel cables. This innovative barrier seal is ideal for use on equipment valves, material drums/canisters, factories' unused gates, overseas containers, racks, carts, and much more. For identification, they can be stamped with six alpha characters and six consecutive numbers at no extra charge.



Choice of Colors: Gray, Dark Green, Red, Blue, Orange, White and Safety Yellow.

- Multi-Lok Cable Seals are silver or color coated.
- Add for color coated seals.
- Bar coded seals are available as a special order. Prices quoted on request.
- Standard cable length is 12 inches
- Additional cable length over 12 inches is available in 2 inch increments
- Add per extra inch to quantity price. For more than 24 inches of cable, consult .

NOTE: Cable cutters are required to remove this seal.

Product Number	Cable Diameter	Price Per Unit				
		50	100	500	2,000	5,000
8909012	1/16"	----- Please Call For Prices -----				
8959012	1/8"	----- Please Call For Prices -----				

Patent Nos.: 5,222,776 5,582,447

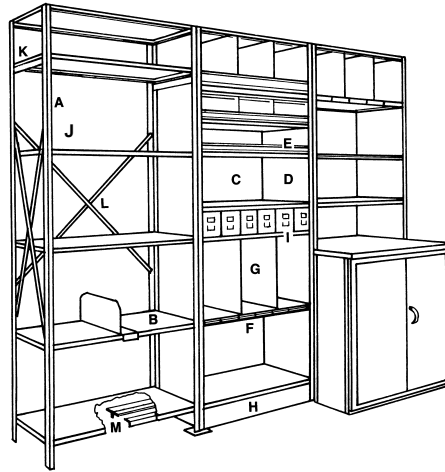


Typical installation and appearance for this style shelving



Many Additional Sizes Available With Multiple Options

Call **TT** for layout and storage planning assistance



This and Opposite Page Discounts:
Up to \$249: List
\$250 to \$500: Less 5%
\$500 to \$999: Less 8%
\$1,000 to \$2,499: Less 10%

Send us your proposed layout or drawing. We will quote promptly.

Versatile Nut & Bolt Type or Industrial Clip Steel Shelving

F. LABEL HOLDERS - Plastic 1" high full width of shelf.

PART NO.	SIZE (WxH)	PRICE/EA.
LH36	36"	CALL
LH48	48"	CALL

G. BIN DIVIDERS - Fastens to holes in shelf face with bolt and nut. NOTE: Must specify shelves to be perforated when ordering dividers. Fits either offset clip or nut & bolt type shelving. Adjustable. Specify shelves to be perforated. Adjust horizontally on 1" centers. Sliding dividers also available.

PART NO.	SIZE (DxH)	PRICE/EA.
BD-612	12x6	CALL
BD-612	12x8	
BD-1012	12x10	
BD-1212	12x12	For
BD-618	18x6	
BD-818	18x8	
BD-1018	18x10	
BD-1218	18x12	Prices
BD-624	24x6	
BD-824	24x8	
BD-1024	24x10	
BD-1224	24x12	

H. CLOSE BASE - Closes space between shelf and floor. Offset base is 2 3/4" high. Angle post base is 1 3/4" high.

W/OFFSET POST	W/ANGLE POST	WIDTH	PRICE/EA.
OBS-0336	BAS-2036	36"	CALL
OBS-0348	BAS-2048	48"	CALL

I. METAL SHELF BOXES - Stop at back prevents accidental pulling out and dropping. Fit between shelf on 6" centers. 4 9/8" high.

PART NO.	SIZE (DxH)	PRICE/EA.
SB5410	5 1/2"X10 7/8"	CALL
SB5416	5 1/2"X16 7/8"	CALL
SB8410	8 1/4"X10 7/8"	CALL
SB8416	8 1/4"X16 7/8"	CALL
SB11410	11 1/4"X10 7/8"	CALL
SB11416	11 1/4"X16 7/8"	CALL

J. ASSEMBLY HARDWARE -

PART NO.		PRICE/EA.
#COP15	Clips/Offset	CALL
#CAUT	Clips/Angle	CALL
#121363	Box of 100 Bolts and Nuts 1/4" x 5/8" Long	CALL
#RB-100	1/4" x 4"	CALL

K. SIDE SHELF SUPPORTS (PAIR) - For use with ledge shelving and shelf reinforcement. Fits bolted angle shelving only.

PART NO.	DEPTH	PRICE/EA.
221-0018	18	Call TT
221-0024	24	Call TT

L. SIDE AND BACK SWAY BRACES - Used on open shelving to eliminate sway. Furnished in pairs. Fits both offset clip and bolted angle post.

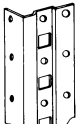
PART NO.	SIZE	PRICE/PAIRS
SIDE BRACES/BACK BRACES		
SB12	12	CALL
SB15	15	
SB18	18	
SB24	24	FOR
SB30	30	
SB36	36	
SB48	48	PRICES

M. SHELF REINFORCING ANGLES - Bolt inside shelf flange to increase shelf capacity. When ordering, please specify if shelves are to be perforated.

PART NO.	SIZE	PRICE/EA.
RB18	18	Call
RB24	24	
RB30	30	For
RB36	36	
RB48	48	Prices

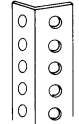
SHELVING COMPONENTS

A. OFFSET ANGLE POST - 4 Posts per unit. Punched on 1 1/2" centers. 14 ga., 1 x 1 3/16".



PART NO.	HEIGHT (INCHES)	PRICE/EA.
OP73	73	CALL
OP85	85	CALL
OP97	97	CALL
OP121	121	CALL

A. NUT & BOLT ANGLE POST - 4 Posts per unit. Punched on 1" centers 13 ga., 1 1/4 x 1 1/4".



PART NO.	HEIGHT (INCHES)	PRICE/EA.
RFP75	75	CALL
RFP87	87	CALL
RFP99	99	CALL
RFP123	123	CALL

B. SHELVES - Triple bent flanges. Supplied with appropriate hardware. Perforations if necessary, **MUST** be specified on ordering.

SIZE (INCHES)	MODEL NUMBER	PRICE #20 GA.	PRICE #18 GA. (add suffix "X")	NOTE:
36x12	S1236			18 GA. capacity is 30% to 40% higher than 20 GA.
36x15	S1536			
36x18	S1836			
36x24	S2436			
36x30	S3036			
48x12	S1248	Call for Prices		
48x15	S1548			
48x18	S1848			
48x24	S2448			
48x30	S3048			

C. BACK PANELS - Use where closed backs are required. Fits either Angle Post or Offset Shelving. Prefix BS for bolts and OB for clips.

PART NO.	SIZE (WxH)	PRICE/EA.
BS/OB3639*	36x39*	Call
BS/OB3651*	36x51	For
BS/OB36 39X2	36x75	Prices
BS/OB207-36 45X2 36x87		

BACK PANELS (cont.) Use prefix BS for bolt type and OB for clip type.

4839*	48x39	CALL
4851*	48x51	CALL
48 39X2	48x75	CALL
48 45X2	48x87	CALL

D. SIDE OR END PANELS - Used where closed sides are required. Order different part numbers for plain angle or offset angle posts. Tall sizes as noted below will be combined - 75" and higher.

W/OFFSET POST	W/ANGLE POST	SIZE (DxH)	PRICE/EA.
OS-1239*	BS-1239*	12x39*	CALL
OS-1251	BS-1251*	12x51*	
OS-1275	BS-1275	12x75	
OS-1287	BS-1287	12x87	
OS-1839*	BS-1839*	18x39*	FOR
OS-1851*	BS-1851*	18x51	
OS-1875	BS-1875	18x75	
OS-1887	BS-1887	18x87	
OS-2439*	BS-2439	24x39*	
OS-2451*	BS-2451*	24x51*	Prices
OS-2475	BS-2475	24x75	
OS-2487	BS-2487	24x87	

* NOTE: For 99" high panels - order 2-51" high panels. for 123" high panels - order 2-39" high and 1-51" high panels (this will allow 3" overlap). Over 51", 2 panels are used.

E. BIN FRONTS - Doubled beaded - Bolt to either angle or offset posts. Use prefix BF for bolted - OBF for clips.

PART NO.	SIZE (WxH)	PRICE/EA.
BF/OBF 136	36x1.5	Call
BF/OBF 148	48x1.5	For
BF/OBF 336	36x3	Prices
BF/OBF 348	48x3	

Quality Steel Shelving – Budget Price - #20 Gauge

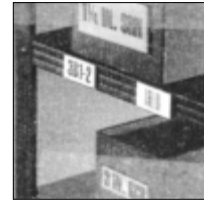
Plain or Offset Angle Posts — gray enamel finish is standard

4 Optional Colors: Blue, Sand, Tan, Putty

How to Order

- Make a layout or sketch of the storage to be ordered.
- Determine the size shelf which you need, the load it must carry, and the number of shelves in each section.
- How tall (post height) will each section be? Four offset angle posts are needed per section.
- Will the shelving be open (cross braces), or closed (side and back panels)?
- How many connected sections will be included in each row of shelving?
- Will any sections be installed back to back?
- Will any special accessories be needed? - Dividers, Bins, etc.
- Calculate the components you'll need using the correct column below. You must specify clips for each shelf or nuts and bolts.
- Call Ted Thorsen if you need assistance or have any problems. We will respond promptly!

NEW Serving Label Holders

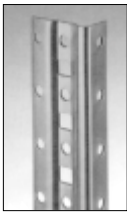


See pgs. 233 & 234.



Sturdy budget shelving holds roll goods in handy bins.

SHELF LOAD CAPACITY		
Evenly distributed pounds per shelf		
Width	Depth	Rating
36"	12"	450
	18"	450
	24"	450
48"	12"	325
	18"	300
	24"	300



Ideal for clip connections

OFFSET POST



Ideal for bolted connectors

ANGLE POST



TRIPLE BEND ADJUSTABLE CLIP OR BOLT TYPE SHELVING



CLIPS FOR OFFSET/BOX POSTS

We will help in preparing layouts.

Ideal economic storage for warehouse, factory, office

Heavy duty steel shelving engineered to fit any storage need. Ideal for warehouse, stockroom or office areas. Fast, easy assembly. Triple bent channel shelves for maximum strength. Use independently or in continuous row. Shipped knocked down. Gray baked-on enamel finish. Other standard colors available. Blue - Sand - Tan - Putty

Your choice of open or closed designs. Many other heights and sizes available. Including 15" Deep Shelves

EASY ADJUST CLIPS 7" 1" HIGH - STURDY BOLTS AND NUTS 7" 3" HIGH

EASY ADJUST CLIPS 7" 1" HIGH - STURDY BOLTS AND NUTS 7" 3" HIGH

OPEN STARTING SECTION

Consists of 4 Posts, 2 Pr. Side Braces, 1 Pr. Back Braces, Shelves

Style OS

5 Shelf Unit	Prefix OS85 Clip OS87 Nut/Bolt		Price
	W	D	
	36"	12"	1236-5
	36"	18"	1836-5
	36"	24"	2436-5
	36"	30"	3036-5
	48"	12"	1248-5
	48"	18"	1848-5
	48"	24"	2448-5
	48"	30"	3048-5

OPEN ADD-ON SECTION

Consists of 4 Posts, 1 Pr. Side Braces, 1 Pr. Back Braces, Shelves

Style OA

5 Shelf Unit	Prefix OA85 Clip OA87 Nut/Bolt		Price
	W	D	
	36"	12"	1236-5
	36"	18"	1836-5
	36"	24"	2436-5
	36"	30"	3036-5
	48"	12"	1248-5
	48"	18"	1848-5
	48"	24"	2448-5
	48"	30"	3048-5

CLOSED STARTING SECTION

Consists of 4 Posts, 2 End Panels 1 Back Panel, Shelves

Style CS

5 Shelf Unit	Prefix CS85 Clip CS87 Nut/Bolt		Price
	W	D	
	36"	12"	1236-5
	36"	18"	1836-5
	36"	24"	2436-5
	36"	30"	3036-5
	48"	12"	1248-5
	48"	18"	1848-5
	48"	24"	2448-5
	48"	30"	3048-5

CLOSED ADD-ON SECTION

Consists of 4 Posts, 1 End Panel 1 Back Panel, Shelves

Style CA

5 Shelf Unit	Prefix CA85 Clip CA87 Nut/Bolt		Price
	W	D	
	36"	12"	1236-5
	36"	18"	1836-5
	36"	24"	2436-5
	36"	30"	3036-5
	48"	12"	1248-5
	48"	18"	1848-5
	48"	24"	2448-5
	48"	30"	3048-5

6 Shelf Unit	Prefix OS85 Clip OS87 Nut/Bolt		Price
	W	D	
	36"	12"	1236-6
	36"	18"	1836-6
	36"	24"	2436-6
	36"	30"	3036-6
	48"	12"	1248-6
	48"	18"	1848-6
	48"	24"	2448-6
	48"	30"	3048-6

6 Shelf Unit	Prefix OA85 Clip OA87 Nut/Bolt		Price
	W	D	
	36"	12"	1236-6
	36"	18"	1836-6
	36"	24"	2436-6
	36"	30"	3036-6
	48"	12"	1248-6
	48"	18"	1848-6
	48"	24"	2448-6
	48"	30"	3048-6

6 Shelf Unit	Prefix CS85 Clip CS87 Nut/Bolt		Price
	W	D	
	36"	12"	1236-6
	36"	18"	1836-6
	36"	24"	2436-6
	36"	30"	3036-6
	48"	12"	1248-6
	48"	18"	1848-6
	48"	24"	2448-6
	48"	30"	3048-6

6 Shelf Unit	Prefix CA85 Clip CA87 Nut/Bolt		Price
	W	D	
	36"	12"	1236-6
	36"	18"	1836-6
	36"	24"	2436-6
	36"	30"	3036-6
	48"	12"	1248-6
	48"	18"	1848-6
	48"	24"	2448-6
	48"	30"	3048-6

8 Shelf Unit	Prefix OS85 Clip OS87 Nut/Bolt		Price
	W	D	
	36"	12"	1236-8
	36"	18"	1836-8
	36"	24"	2436-8
	36"	30"	3036-8
	48"	12"	1248-8
	48"	18"	1848-8
	48"	24"	2448-8
	48"	30"	3048-8

8 Shelf Unit	Prefix OA85 Clip OA87 Nut/Bolt		Price
	W	D	
	36"	12"	1236-8
	36"	18"	1836-8
	36"	24"	2436-8
	36"	30"	3036-8
	48"	12"	1248-8
	48"	18"	1848-8
	48"	24"	2448-8
	48"	30"	3048-8

8 Shelf Unit	Prefix CS85 Clip CS87 Nut/Bolt		Price
	W	D	
	36"	12"	1236-8
	36"	18"	1836-8
	36"	24"	2436-8
	36"	30"	3036-8
	48"	12"	1248-8
	48"	18"	1848-8
	48"	24"	2448-8
	48"	30"	3048-8

8 Shelf Unit	Prefix CA85 Clip CA87 Nut/Bolt		Price
	W	D	
	36"	12"	1236-8
	36"	18"	1836-8
	36"	24"	2436-8
	36"	30"	3036-8
	48"	12"	1248-8
	48"	18"	1848-8
	48"	24"	2448-8
	48"	30"	3048-8

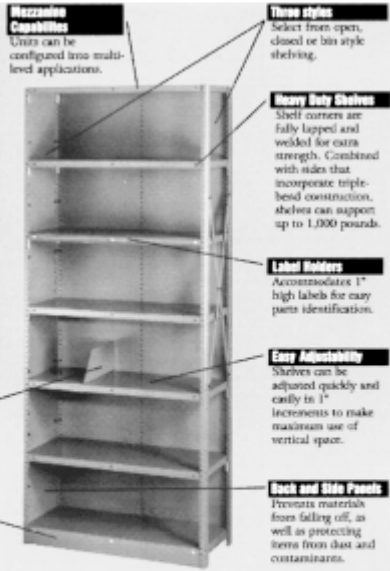
*SPECIFY CLIP OR BOLTED CONNECTIONS All Sections shipped K.D. with hardware
MANY ADDITIONAL SIZES AVAILABLE. CALL FOR DETAILS.

Easy to Use, Boltless "Q Line" Shelving Is Our

The Latest Up-To-Date Design Featuring Structural Box Formation on the

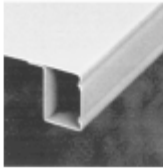
Q Line Shelving

QLine shelving is designed for those storage applications that demand strength and versatility. Its solid Box Beam construction and heavy duty steel shelves combine to increase load-bearing capacity up to 1,000 lbs. QLine is available in open and closed style units in 20 & 22 gauge steel with a wide range of accessories and options. It's also easily adaptable to fit mezzanine systems.



Superior Strength

QLine shelves use a structural box formation on the front and rear flanges. The face of the box is ribbed and the flange is welded every three inches. The shelf ends have three bends (competing shelves use only two) for added front to back strength. The net result is the strongest shelf in its class, with a load capacity up to 1,000 pounds!



Boltless Assembly

Compression clips make adding shelves a snap. Just clip on. No bolts or tools required.



BEADED FRONT BIN DIVIDERS

Cat. No.	W	D	H	Wt.	Price
12" Deep					
BD-1206	7/32	12	6	.6	Call
BD-1209	7/32	12	9	1.0	
BD-1212	7/32	12	12	1.3	
BD-1215	7/32	12	15	1.6	
BD-1218	7/32	12	18	1.9	
15" Deep					
BD-1506	7/32	15	6	1.0	for
BD-1509	7/32	15	9	1.3	
BD-1512	7/32	15	12	1.8	
BD-1515	7/32	15	15	2.0	
BD-1518	7/32	15	18	2.7	
18" Deep					
BD-1806	7/32	18	6	1.0	Prices
BD-1809	7/32	18	9	1.5	
BD-1812	7/32	18	12	2.0	
BD-1815	7/32	18	15	2.5	
BD-1818	7/32	18	18	3.0	

Other sizes available; consult factory for pricing and weights.

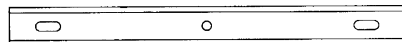
BIN FRONTS

Cat. No.	W	D	H	Wt.	Price
36" Wide					
BF-362	36	3/64	2	1.3	Call
BF-364	36	3/64	4	2.3	
BF-366	36	3/64	6	3.9	
42" Wide					
BF-422	42	3/64	2	2.0	for
BF-424	42	3/64	4	2.8	
BF-426	42	3/64	6	4.2	
48" Wide					
BF-482	48	3/64	2	2.3	Prices
BF-484	48	3/64	4	3.0	
BF-486	48	3/64	6	4.5	

Includes hardware necessary for attaching to unit.

LABEL HOLDER

Cat. No.	W	D	H	Wt.	Price
LH-36	36	3/16	7/8	.3	CALL
LH-42	42	3/16	7/8	.4	CALL
LH-48	48	3/16	7/8	.5	CALL



Mezzanine Capabilities
Units can be configured into multi-level applications.

Three styles
Select from open, closed or bin style shelving.

Heavy Duty Shelves
Shelf corners are fully lapped and welded for extra strength. Combined with slats that incorporate triple-bend construction, shelves can support up to 1,000 pounds.

Label Holders
Accommodates 1" high labels for easy parts identification.

Easy Adjustability
Shelves can be adjusted quickly and easily in 1" increments to make maximum use of vertical space.

Back and Side Panels
Prevents material from falling off, as well as protecting items from dust and contaminants.

Sliding Dividers
Can be placed anywhere on a shelf instantly. Built-in label holder for additional parts identification.

Front Base
Keeps material from rolling underneath units.

Q-LINE SHELVES (22 Gauge)

Up to 700 lbs./shelf - Order Clips Separately

Cat. No.	Capacity	W	D	H	Wt.	Price
36" Wide						
Q2-3612	700	36	12	1 1/16	6.2	Call for Prices
Q2-3615	650	36	15	1 1/16	7.2	
Q2-3618	650	36	18	1 1/16	8.4	
Q2-3624	650	36	24	1 1/16	10.3	
Q2-3630	650	36	30	1 1/16	12.3	
42" Wide						
Q2-4212	600	42	12	1 1/16	7.2	7.2 8.3 9.5 11.9 14.2
Q2-4215	600	42	15	1 1/16	8.3	
Q2-4218	550	42	18	1 1/16	9.5	
Q2-4224	550	42	24	1 1/16	11.9	
Q2-4230	500	42	30	1 1/16	14.2	
48" Wide						
Q2-4812	500	48	12	1 1/16	8.1	8.1 9.5 10.8 13.5 16.1
Q2-4815	500	48	15	1 1/16	9.5	
Q2-4818	450	48	18	1 1/16	10.8	
Q2-4824	450	48	24	1 1/16	13.5	
Q2-4830	400	48	30	1 1/16	16.1	

Box Beam construction with closed welded corners. Weight and price are per shelf. Shelves are available in bundles only.

Q-LINE SHELVES WITH STIFFENERS FOR ADDED WEIGHT CAPACITIES IN #20 GAUGE

Up to 750 lbs/shelf

Cat. No.	Capacity	W	D	H	Wt.	Price
36" Wide						
Q-3624-S	1,000	36	24	1 1/16	13.7	Call
Q-3630-S	900	36	30	1 1/16	16.2	
Q-3636-S	700	36	36	1 1/16	18.7	
42" Wide						
Q-4224-S	700	42	24	1 1/16	15.9	for
Q-4230-S	800	42	30	1 1/16	18.7	
Q-4236-S	750	42	36	1 1/16	21.6	
48" Wide						
Q-4824-S	650	48	24	1 1/16	18.1	Prices
Q-4830-S	650	48	30	1 1/16	21.2	
Q-4836-S	450	48	36	1 1/16	24.5	

Box Beam construction with closed welded corners. Weight and price are per shelf. Shelves are available in bundles only.

END PANELS

Depth	Cat. No.	Height	Weight	Price
12" Deep				
	EP-1239	39	3.4	Call
	EP-1248	48	4.1	
	EP-1251	51	4.4	
15" Deep				
	EP-1275	75	6.4	for
	EP-1284	84	7.2	
	EP-1287	87	7.5	
18" Deep				
	EP-1539	39	4.2	Prices
	EP-1548	48	5.1	
	EP-1551	51	5.4	
24" Deep				
	EP-1575	75	8.0	for
	EP-1584	84	9.0	
	EP-1587	87	9.4	
30" Deep				
	EP-1839	39	5.0	for
	EP-1848	48	6.1	
	EP-1851	51	6.5	
36" Deep				
	EP-1875	75	9.6	for
	EP-1884	84	10.7	
	EP-1887	87	11.1	
42" Deep				
	EP-2439	39	6.6	for
	EP-2448	48	8.1	
	EP-2451	51	8.6	
48" Deep				
	EP-2475	75	12.7	for
	EP-2484	84	14.2	
	EP-2487	87	14.7	
54" Deep				
	EP-3039	39	8.2	for
	EP-3048	48	10.1	
	EP-3051	51	10.8	
60" Deep				
	EP-3075	75	15.8	for
	EP-3084	84	17.7	
	EP-3087	87	18.4	
72" Deep				
	EP-3639	39	9.9	for
	EP-3648	48	12.1	
	EP-3651	51	12.9	
84" Deep				
	EP-3675	75	18.9	for
	EP-3684	84	21.2	
	EP-3687	87	22.0	

BACK PANELS

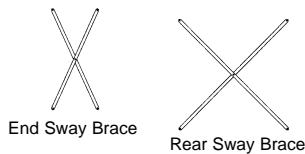
Depth	Cat. No.	Height	Weight	Price
36" Wide				
	BP-3639	39	9	Call for Prices
	BP-3648	48	11	
	BP-3651	51	12	
	BP-3675	75	18	
	BP-3684	84	20	
42" Wide				
	BP-3687	87	21	for
	BP-4239	39	11	
	BP-4248	48	14	
	BP-4251	51	15	
	BP-4275	75	22	
48" Wide*				
	BP-4284	84	24	Prices
	BP4287	87	25	
	BP-4839	39	14	
	BP-4848	48	17	
	BP-4851	51	18	
	BP-4875	75	26	for
	BP-4884	84	29	
	BP-4887	87	30	

*Note: 48" backs consist of two pieces.

SWAY BRACES - (Sold in Pairs)

Cat. No.	Shelf Depth	Wt.	Price
End Sway Braces			
ESB-1224	12" to 24"	2.3	Call for prices
ESB-30	30"	2.7	Call for prices
ESB-36	36"	2.9	Call for prices

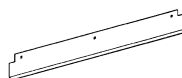
Cat. No.	Unit Length	Wt.	Price
Rear Sway Braces			
RSBU	36" to 42"	3.1	CALL CALL
RSB-48	48"	3.6	CALL CALL



FRONT BASE STRIP

Cat. No.	W	D	H	Wt.	Price
FBS-362	36	1/2	1 1/8	1.5	CALL
FBS-422	42	1/2	1 1/8	1.8	CALL
FBS-482	48	1/2	1 1/8	2.0	CALL

Includes hardware necessary for attaching to unit.



FOOT PLATE

Cat. No.	W	D	H	Wt.	Price
FP-1	1 1/2	1/16	2 1/4	.3	CALL

Used to secure uprights to the floor.

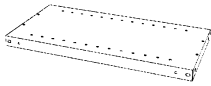
DISCOUNTS:
Up to \$499.00: List \$500 to \$999.00: 5%
\$1,000 to \$2,499.00: 8%

Premium Quality Product

Medium Grey Standard - Light Grey and Sand Color Available. Call for Lead Times

Front and Rear Flanges - Load Capacities Up to 1,000 lbs./shelf on some reinforced sizes - See Below

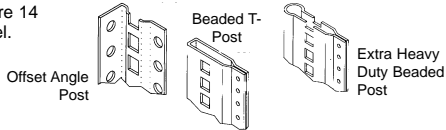
Q-LINE Shelves are punched to accept shelf dividers - **Order Clips Separately**



SHELVES (20 Gauge) Up to 800 lbs./shelf

Cat. No.	Capacity	W	D	H	Wt.	Price
36" Wide						
Q-3612	1000	36	12	1 1/16	7.4	Call
Q-3615	900	36	15	1 1/16	8.7	
Q-3618	850	36	18	1 1/16	10.1	for
Q-3624	850	36	24	1 1/16	12.3	
42" Wide						
Q-4212	800	42	12	1 1/16	8.6	
Q-4215	700	42	15	1 1/16	10.0	
Q-4218	650	42	18	1 1/16	11.4	
Q-4224	650	42	24	1 1/16	14.3	
Q-4230	600	42	30	1 1/16	17.1	
Q-4236	Call TT	42	36	1 1/16	20.0	Prices
48" Wide						
Q-4812	600	48	12	1 1/16	9.8	
Q-4815	550	48	15	1 1/16	11.4	
Q-4818	550	48	18	1 1/16	13.0	
Q-4824	550	48	24	1 1/16	16.2	
Q-4830	500	48	30	1 1/16	19.3	
Q-4836	Call TT	48	36	1 1/16	22.6	

All posts are 14 gauge steel.



UPRIGHT POSTS - IN THREE STYLES

Cat. No.	Qty.	W	D	H	Wt.	Price
Offset Angle Post - Most Popular						
OAP-39	12	1	1 1/8	39	2.1	
OAP-48	12	1	1 1/8	48	2.5	Call
OAP-51	12	1	1 1/8	51	2.7	
OAP-75	12	1	1 1/8	75	4.0	
OAP-84	12	1	1 1/8	84	4.2	for
OAP-87	12	1	1 1/8	87	4.7	
OAP-99	12	1	1 1/8	99	5.3	
OAP-111	12	1	1 1/8	111	5.9	
OAP-123	12	1	1 1/8	123	6.5	Prices
Beaded T-Post - For Maximum Front Opening						
BTP-39	5	3/8	1 1/8	39	2.9	
BTP-48	5	3/8	1 1/8	48	3.5	
BTP-51	5	3/8	1 1/8	51	3.7	
BTP-75	5	3/8	1 1/8	75	5.5	
BTP-84	5	3/8	1 1/8	84	5.9	
BTP-87	5	3/8	1 1/8	87	6.2	
Extra Heavy Duty Beaded T-Post - Intermediate Connections						
HBP-39	5	3/4	2 1/8	39	4.4	
HBP-48	5	3/4	2 1/8	48	5.4	
HBP-51	5	3/4	2 1/8	51	5.8	
HBP-75	5	3/4	2 1/8	75	8.5	
HBP-84	5	3/4	2 1/8	84	9.8	
HBP-87	5	3/4	2 1/8	87	10.1	
HBP-99	5	3/4	2 1/8	99	11.2	
HBP-111	5	3/4	2 1/8	111	12.5	
HBP-123	5	3/4	2 1/8	123	13.9	

SLIDING DIVIDERS - FOR ALL SHELVES

Depth	Cat. No.	Height	Weight	Price
9" Deep	SD-0930	3.0	.4	
	SD-0945	4.5	.7	Call
	SD-0960	6.0	.8	
12" Deep	SD-1230	3.0	.5	for
	SD-1245	4.5	.9	
	SD-1260	6.0	1.0	prices
15" Deep	SD-1530	3.0	.6	
	SD-1545	4.5	1.1	
	SD-1560	6.0	1.2	
18" Deep	SD-1830	3.0	.8	
	SD-1845	4.5	1.4	
	SD-1860	6.0	1.5	
24" Deep	SD-2430	3.0	1.0	
	SD-2445	4.5	1.8	
	SD-2460	6.0	2.0	

SHELF CLIPS

Cat. No.	W	D	H	Wt.	Price
T-1	1	1/2	2 1/4	.1	CALL

Attaches shelves to uprights

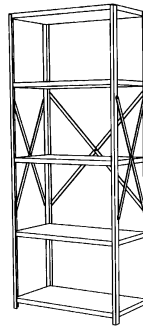
Q-LINE SHELVING - OPEN STYLE UNITS - 22 Gauge - Up to 600 lbs./shelf

OPEN STYLE STARTER UNITS

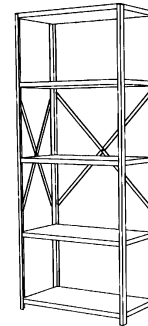
Cat. No.	W	D	H	Wt.	Price
5 Shelves					
QO5-3612S	36	12	87	58	Call
QO5-3615S	36	15	87	63	
QO5-3618S	36	18	87	69	for
QO5-3624S	36	24	87	78	
6 Shelves					
QO6-3612S	36	12	87	64	Prices
QO6-3615S	36	15	87	70	
QO6-3618S	36	18	87	77	
QO6-3624S	36	24	87	88	
7 Shelves					
QO7-3612S	36	12	87	70	
QO7-3615S	36	15	87	77	
QO7-3618S	36	18	87	85	
QO7-3624S	36	24	87	99	
8 Shelves					
QO8-3612S	36	12	87	76	
QO8-3615S	36	15	87	84	
QO8-3618S	36	18	87	94	
QO8-3624S	36	24	87	109	
9 Shelves					
QO9-3612S	36	12	87	82	
QO9-3615S	36	15	87	91	
QO9-3618S	36	18	87	102	
QO9-3624S	36	24	87	119	

OPEN STYLE ADDER UNITS

Cat. No.	W	D	H	Wt.	Price
5 Shelves					
QO5-3612A	36	12	87	55	Call
QO5-3615A	36	15	87	60	
QO5-3618A	36	18	87	66	for
QO5-3624A	36	24	87	76	
6 Shelves					
QO6-3612A	36	12	87	61	Prices
QO6-3615A	36	15	87	67	
QO6-3618A	36	18	87	75	
QO6-3624A	36	24	87	86	
7 Shelves					
QO7-3612A	36	12	87	68	
QO7-3615A	36	15	87	75	
QO7-3618A	36	18	87	83	
QO7-3624A	36	24	87	96	
8 Shelves					
QO8-3612A	36	12	87	74	
QO8-3615A	36	15	87	82	
QO8-3618A	36	18	87	91	
QO8-3624A	36	24	87	107	
9 Shelves					
QO9-3612A	36	12	87	80	
QO9-3615A	36	15	87	89	
QO9-3618A	36	18	87	100	
QO9-3624A	36	24	87	117	



All shelves are 22 gauge.



Call for Layout and Storage Planning Assistance



Beaded "T" Posts and closed ends in a large auto dealership's modern parts storage area.

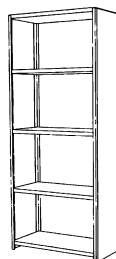
Q-LINE SHELVING - CLOSED STYLE UNITS - 22 Gauge - Up to 600 lbs./shelf

CLOSED STYLE STARTER UNITS

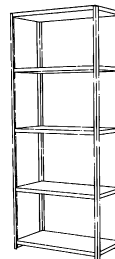
Cat. No.	W	D	H	Wt.	Price
5 Shelves					
QC5-3612S	36	12	87	86	Call
QC5-3615S	36	15	87	95	
QC5-3618S	36	18	87	104	for
QC5-3624S	36	24	87	121	
6 Shelves					
QC6-3612S	36	12	87	92	Prices
QC6-3615S	36	15	87	102	
QC6-3618S	36	18	87	112	
QC6-3624S	36	24	87	131	
7 Shelves					
QC7-3612S	36	12	87	98	
QC7-3615S	36	15	87	109	
QC7-3618S	36	18	87	121	
QC7-3624S	36	24	87	141	
8 Shelves					
QC8-3612S	36	12	87	104	
QC8-3615S	36	15	87	116	
QC8-3618S	36	18	87	129	
QC8-3624S	36	24	87	152	
9 Shelves					
QC9-3612S	36	12	87	111	
QC9-3615S	36	15	87	123	
QC9-3618S	36	18	87	138	
QC9-3624S	36	24	87	162	

CLOSED STYLE ADDER UNITS

Cat. No.	W	D	H	Wt.	Price
5 Shelves					
QC5-3612A	36	12	87	78	
QC5-3615A	36	15	87	85	call
QC5-3618A	36	18	87	93	
QC5-3624A	36	24	87	106	for
6 Shelves					
QC6-3612A	36	12	87	85	prices
QC6-3615A	36	15	87	92	
QC6-3618A	36	18	87	101	
QC6-3624A	36	24	87	116	
7 Shelves					
QC7-3612A	36	12	87	91	
QC7-3615A	36	15	87	100	
QC7-3618A	36	18	87	110	
QC7-3624A	36	24	87	127	
8 Shelves					
QC8-3612A	36	12	87	97	
QC8-3615A	36	15	87	107	
QC8-3618A	36	18	87	118	
QC8-3624A	36	24	87	137	
9 Shelves					
QC9-3612A	36	12	87	103	
QC9-3615A	36	15	87	114	
QC9-3618A	36	18	87	127	
QC9-3624A	36	24	87	147	



All shelves are 22 gauge. Includes two sides and one back.



Beaded "T" Posts enclosure panels and slanted shelves help hold athletic jackets by size in slippery poly bags. Ready for easy picking and quick replenishment.

High Rise Roll Goods Storage Uses Rivet Beam Construction

Make maximum use of available ceiling height — Locate each roll quickly and positively
Simplify Inventory Control and Computer Aided Picking.



19 ft. and 20 ft. tall units with 14 and 15 levels assemble quickly into sturdy 6 ft. deep storage bays with 4 ft. cross front openings. This concept will work well for other products, also.



Work nears completion on this system, which will be serviced by a man-ride order picker able to stock, select, and inventory over 7000 individual rolls easily and confidently with minimum lost time and motion. Assembly is sure and simple – saves time.



Typical Multi-Aisle boxed apparel picking/storage installation using rivet beam construction using rivet beam parts and particle board decking to size. This is the choice with best economy.



Practical rivet beam storage rack construction requires no nuts or bolts on the outer framing. Deck shown is "Masonite"™ type material with rounded top edge — 5/8" thick. Other deck choices are available. Call . We will assist with design.

Call for prompt layout and storage planning assistance.

Rivet Beam Steel Framing Angle System

A completely boltless interlock steel framing system uses wood decking and metal framing for maximum efficiency.

BEAM LOAD TABLE (CAPACITY PER PAIR)

Recommended Safe Use Allowable Uniformly Distributed Hand Loaded Static Beam Loads

	Length inches	Cap. lbs.	Deflection inches	Cap. lbs.	Deflection inches
--	---------------	-----------	-------------------	-----------	-------------------

SINGLE RIVET BEAMS

Standard Beam	36	350	0.25	*	*
	42	300	0.30	*	*
	48	250	0.34	*	*
Heavy Duty	36	600	0.25	*	*
	42	550	0.30	*	*
	48	500	0.34	*	*

DOUBLE RIVET SHELF BEAMS

		Without Center Supports (***)	With Center Supports (*)		
Standard Beam	36	1000	***	*	*
	42	780	***	*	*
	48	850	***	875**	0.12
Heavy Duty Beam	48	750	***	1400**	0.16
	60	600	***	1200	0.25
	69	525	***	1050	0.33
	72	500	***	1000	0.36
	84	*	*	840	0.49
	96	*	*	620	0.53

DOUBLE RIVET CHANNEL BEAMS

60	*	*	2240	0.23
72	*	*	1850	0.33
84	*	*	1600	0.45
96	*	*	1400	0.59

DOUBLE RIVET ZEE STEP BEAMS

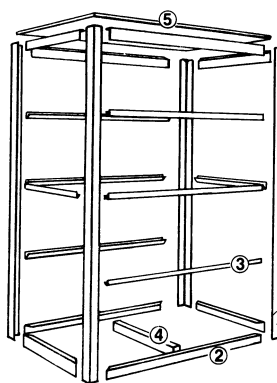
48	1250	1750
60	750	1000
69	600	1000
72	600	1000

(*) One support per pair of beams except 96" which have two supports.

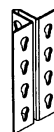
(**) Refer to shelf load capacities for beam capacities when depth is 30", 36" and 48".

(***) Beam rotation is less than 6 degrees.

Call for prompt assistance with layout and design of your storage project.



New T Post



T Posts

Faster assembly. Carries heavier loads. 1 1/2" adjustments up or down. 14 GA. steel.

EASY TO LAYOUT YOUR STORAGE FRAMING NEEDS

1. Draw a layout or a dimensional sketch of area where framing is to be installed.
2. Determine height of units desired. Specify depth and width of shelves.
3. Determine number of shelves per unit. Add accessory parts.
4. Order parts by model number only.

CONTACT TED THORSEN FOR FREE ENGINEERING SERVICE WITHOUT OBLIGATION.

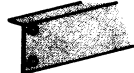
RIVET-RAX™ INTERLOCK ASSEMBLY

Rivets wedge into slots without use of bolts, nuts, clips or sway braces. Easy assembly. Fast readjustment.

OUTSTANDING FEATURES FOR PRACTICAL, ORGANIZED STORAGE



1. **Angle Posts**
Punched for 1 1/2" adjustments up or down. Heavy duty 14 GA. steel.



2. **Double Rivet Beam**
Angle shelf support rigidizes rack unit front to rear or side by side. Eliminates braces.



3. **Single Rivet Beam**
Used as a shelf support on intermediate rack shelf spaces. One rivet on each end.



4. **Support Channels**
Prevents spreading of beams and acts as a support of decking. Used on 60" (or wider) beams.



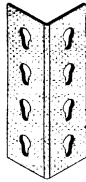
5. **Particle Board Deck**
Industrial grade 5/8" thick particle board deck provides strong shelf surface. Natural finish.

Rivet Angle Parts – Quantity Discounts Available – See Below

ANGLE POSTS Heavy Duty

Roll formed 1 1/2" x 1 1/2" x 13 gauge, punched on 1 1/2" centers for fast adjustment. All posts are supplied in one piece lengths.

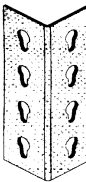
MODEL NO.	HEIGHT IN.	PRICE/EA.	WT. (lbs.)
46AS03C	36	CALL	2.1
46AS04C	48	CALL	2.8
46AS05C	60	CALL	3.4
46AS06C	72	CALL	4.1
46AS07C	84	CALL	4.8
46AS08C	96	CALL	5.5
46AS08C	108	CALL	6.1
46AS10C	120	CALL	6.8
46AS12C	144	CALL	8.2



ANGLE POSTS Super Duty

Roll formed 1 7/8" x 1 7/8" x 13 gauge punched on 1 1/2" centers for fast adjustment. All posts are supplied in one piece lengths.

MODEL NO.	HEIGHT IN.	PRICE/EA.	WT. (lbs.)
46AH08C	96	SCALL	6.7
46AH09C	108	CALL	7.5
46AH10C	120	CALL	8.3
46AH12C	144	CALL	10.1
46AH14C	168	CALL	11.6
46AH16C	192	CALL	13.3
46AH18C	216	CALL	14.9



TEE POSTS Heavy Duty

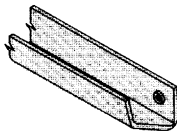
Roll formed 3" x 1 1/2" x 14 gauge, punched on 1 1/2" centers for fast adjustment. Used as common post between units.

MODEL NO.	HEIGHT IN.	PRICE/EA.	WT. (lbs.)
46TS03C	36	SCALL	3.8
46TS04C	48	CALL	5.0
46TS05C	60	CALL	6.2
46TS06C	72	CALL	7.4
46TS07C	84	CALL	8.6
46TS08C	96	CALL	9.9
46TS09C	108	CALL	11.1
46TS10C	120	CALL	12.3
46TS12C	144	CALL	14.7



SINGLE RIVET SHELF BEAMS

For use as left to right and front to back shelf support. See Beam Load Table for capacity.



Standard

MODEL NO.	LENGTH IN.	PRICE/EA.	WT. (lbs.)
46SS12C	12	SCALL	0.6
46SS15C	15	CALL	0.7
46SS18C	18	CALL	0.9
46SS24C	24	CALL	1.1
46SS30C	30	CALL	1.3
46SS36C	36	CALL	1.6
46SS42C	42	CALL	1.9
46SS48C	48	CALL	2.1

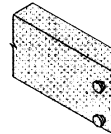
Heavy Duty

Heavy duty 36" support beam capacity is 600 lbs. per pair. Heavy duty 48" support beam capacity is 500 lbs. per pair.

MODEL NO.	LENGTH IN.	PRICE/EA.	WT. (lbs.)
46HS36	36	SCALL	3.2
46HS42	42	CALL	3.7
46HS48	48	CALL	4.2

DOUBLE RIVET ANGLE BEAMS

2 3/4" h. x 1" d. For left to right and front to back shelf support. NOTE: "R" is for beams punched to accept Record Storage Box Supports.



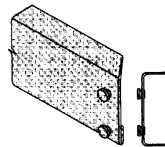
MODEL NO.	LENGTH IN.	PRICE/EA.	WT. (lbs.)
46SB12C	12	SCALL	0.8
46SB15C	15	CALL	1.0
46SB18C	18	CALL	1.2
46SB24C	24	CALL	1.6
46SB30C	30	CALL	2.0
46SB32C	32	CALL	2.2
46SB36C	36	CALL	2.3
46SB42C	42	CALL	2.7
46SB48C	48	CALL	3.1

Heavy Duty

46HB60C	60	SCALL	4.7
46HB69C	69	CALL	5.4
46HB72C	72	CALL	5.7
46HB84C	84	CALL	6.6
46HB96C	96	CALL	7.5

DOUBLE RIVET CHANNEL BEAMS

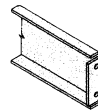
3" h. x 1" d. For left to right shelf support. Provides for a higher capacity than Heavy Duty Double Rivet Angle Beams. NOTE: When a bottom shelf is required to be at the bottom level, use a Heavy Duty Double Rivet Angle Beam.



MODEL NO.	LENGTH IN.	PRICE/EA.	WT. (lbs.)
46CB60C	60	CALL	6.0
46CB69C	69	CALL	7.0
46CB72C	72	CALL	7.2
46CB84C	84	CALL	8.4
46CB96C	96	CALL	9.6

CENTER SUPPORTS/TIE BEAMS

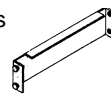
2 3/4" h. Bolts to double rivet or channel beams to add support to decking and stabilize beams. Supplied with bolts and wing nuts for fast assembly.



MODEL NO.	LENGTH IN.	PRICE/EA.	WT. (lbs.)
46CS12	12	CALL	1.0
46CS15	15	CALL	1.2
46CS18	18	CALL	1.4
46CS24	24	CALL	1.8
46CS30	30	CALL	2.2
46CS32	32	CALL	2.4
46CS36	36	CALL	2.7
46CS42	42	CALL	3.1
46CS48	48	CALL	3.5

DOUBLE ROW/TOP & WALL TIES

Used to space back-to-back units and to top-tie rows across aisles for added stability to walls.

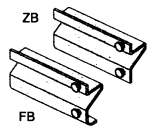


MODEL NO.	LENGTH IN.	PRICE/EA.	WT. (lbs.)
46RT09	9 1/4	SCALL	0.8
46RT09	15 1/4	CALL	1.2
46RT18	18 1/4	CALL	1.4
46RT36	36 1/4	CALL	2.5
46WT09	9 1/4	CALL	0.8

WALLTIE

DOUBLE RIVET ZEE STEP BEAMS

2 1/8" h. For left to right and front to back shelf support. Lower profile than other double rivet beams allows more useable space between shelf levels.



MODEL NO.	LENGTH IN.	PRICE/EA.	WT. (lbs.)
46ZB12	12	SCALL	0.9
46ZB15	15	CALL	1.1
46ZB18	18	CALL	1.3
46ZB24	24	CALL	1.8
46ZB30	30	CALL	2.2
46ZB32	32	CALL	2.4
46ZB36	36	CALL	2.7
46ZB42	42	CALL	3.1
46ZB48	48	CALL	3.5
46ZB60	60	CALL	4.4

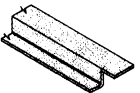
Heavy Duty FB Style Beam

46ZB69	69	CALL	5.6
46ZB72	72	CALL	5.8

Discount Schedule
Up to 249: List
250 - 499: Less 8%
500 - 999: Less 10%
1000 - 2499: Less 12 1/2%

DECKING SUPPORT FOR ZEE BEAMS

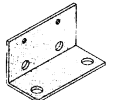
1 1/8" h. - 11 gauge. Provides front to back support for decking when used with Zee Step Beams.



MODEL NO.	LENGTH IN.	PRICE/EA.	WT. (lbs.)
46ZS24	24	SCALL	2.2
46ZS30	30	CALL	2.8
46ZS32	32	CALL	3.0
46ZS36	36	CALL	3.3
46ZS42	42	CALL	3.9
46ZS48	48	CALL	4.4

FOOT PLATE

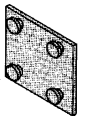
For use in anchoring angle and tee posts to the floor. (Hardware included for attaching to posts. Hardware to anchor to the floor not included.)



MODEL NO.	HEIGHT IN.	PRICE/EA.	WT. (lbs.)
46FP0H	4	CALL	0.5

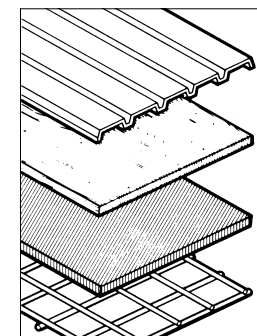
TIE PLATE

Used to join Angle Post units side by side to insure proper row alignment.



MODEL NO.	HEIGHT IN.	PRICE/EA.	WT. (lbs.)
46TP00C	3	CALL	0.2

Shelf Deck Options



Please see This Catalog page 225.

Decking material — plywood, particle board, wire, corrugated, steel and custom designs. Corrugated steel available perforated for sprinkler penetration.

Garment Hanger Bars

Available in lengths 3' to 7' for connections between beams or posts. Call [TT] for prices and availability.

[TT] has popular deck choices available including wire mesh, corrugated steel, and industrial particle board.

Ridg-U-Span™ from Ted Thorsen

Wide Span shelving for all hand load applications

Ridg-U-Span wide-span shelving is an efficient, cost effective means of storing bulk material.

When assembled, Ridg-U-Span's four basic components — upright frames, beams, supports and shelf material — create a rigid and stable hand-loaded, bulk storage system. Optional locking devices provide additional security from accidental dislodgement of beams from upright columns.

Ridg-U-Span's modular design allows a single unit to stand alone or future expansion by use of a common upright frame.

Accessories such as back-to-back ties, bridge beams and adjustable load stops are available to meet your specific storage needs.

The pre-engineering of Ridg-U-Span establishes this bulk storage system as the highest quality, most versatile shelving available.

Upright Frames

All steel construction with welded "C" channel supports — available in a wide variety of sizes and capacities.

Beams

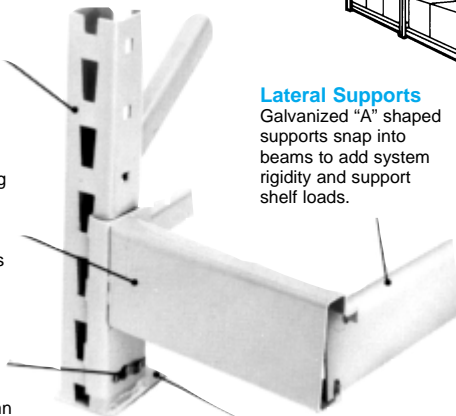
All steel step-beams with welded, three-lug hook plates accept plywood, particle board, wire or steel shelf material. Beams can be designed to support special load size or capacity.

Locking Device (Optional)

Snaps into the column to prevent accidental disengagement of the beam from the column. (Bolt connection is also available)

Optional colors

Lt. Office Gray
Dk. Machinery Gray
Orange
Bright Green
Medium Blue

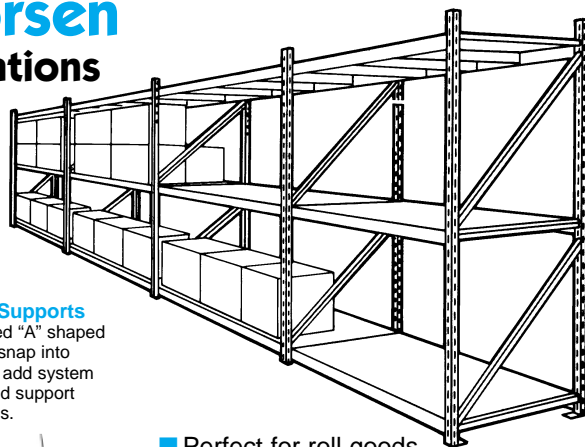


Lateral Supports

Galvanized "A" shaped supports snap into beams to add system rigidity and support shelf loads.

Foot Plate

Welded foot plate has pre-punched, offset anchoring hole to permit on-spot lagging.



Frames and beams shown in the tables are typical — other sizes are available. When using plywood decks, as an example, add 1/2" to length of beam.

Color selections for Ridg-U-Span shelving
Beige is standard color

Call or FAX Ted Thorsen for prompt pricing on a layout and storage design tailored to your exact requirement.

- Perfect for roll goods
- All steel construction for strength and rigidity
- Optional locking devices for greater safety
- Up to 20 ft. tall
Up to 60 ft. deep
- Vertically adjustable on 2" centers
- Easy to assemble — boltless connections
- Many sizes in stock for prompt shipment, or shipment 2 1/2 to 3 weeks
- Works well with solid, mesh, or corrugated decking (see below and page #225)

Ridg-U-Span™ Accessories from Ted Thorsen

Other Accessories

- Frame protectors
- Caster mounts
- Adjustable load stops
- Bridge beams

Warehouse Storage

Eighteen foot, continuous upright frames provide maximized use of floor space in this warehousing application. Wire "waterfall" decking placed over beams addresses two important aspects of warehouse storage:

1. Maintaining dust free shelves.
2. Meeting fire regulations. Back-to-back ties connect each row of shelving to provide additional rigidity.



This Ridg-U-Span system features a 6,000 lb. capacity top shelf to handle lift truck loading. Standard capacity beams on the lower levels display hand loaded stock items.

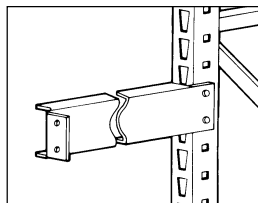
Other Applications

- Archives/Records storage
- Office shelving
- Mezzanines
- Mobile racks
- Garment storage
- Any special design for custom applications.

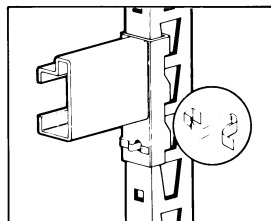


Supply Storage — Trim-Box Stock

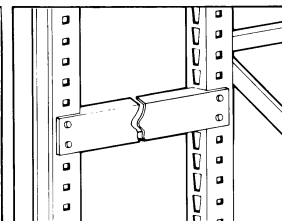
Conventional Ridg-U-Span wide-span shelving is ideal for hand loaded bulk storage of supplies on 5/8" industrial grade particle board. Deck supports under each shelf provide maximum reinforcement.



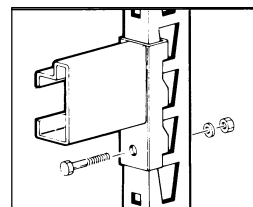
Frame-to-wall spacers



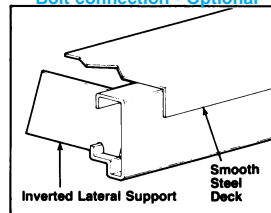
Locking clip - Optional



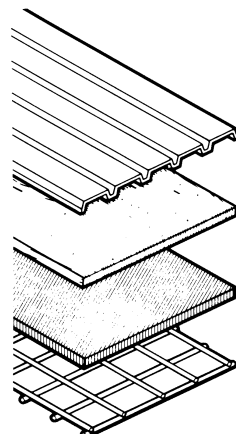
Frame-to-Frame spacers



Bolt connection - Optional



Inverted beam arrangement for smooth steel decks



Decking material — plywood, particle board, wire, corrugated, steel and custom designs.

Please Call ■.



Wide Span Components Combine to Meet Every Medium Duty Storage Need

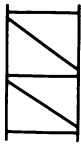
Popular Styles Shown - Many Others Available

Upright Frames - Maximum Ht. 20 ft. — Maximum Depths to 6 ft.

Upright Frames

Upright frames are fabricated of 1 1/4" square columns, rigidly reinforced with welded horizontal and diagonal "C" channel bracing—all manufactured from 14 gauge steel. Foot plates employ an offset anchoring hole to allow on-spot lagging. Shelf placement is vertically adjusted on 2" centers.

Upright frames are available in a variety of standard sizes ranging from 72" to 240" in height. Each upright frame is one continuous component—no splicing required for taller units. All upright frames have a safety factor of 1.92 based on minimum yield of steel.

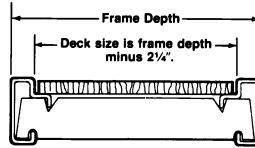


Catalog Number	*Nominal Height	Frame Depth	Weight Lbs.	Price
WUF-L-17-6-24	72"	24"	23.8	Call
**WUF-L-17-6-26.25	72"	26.25"	24.3	for
WUF-L-17-6-30	72"	30"	25.0	Prices
WUF-L-17-6-36	72"	36"	26.5	
WUF-L-17-6-42	72"	42"	28.0	
WUF-L-17-6-48	72"	48"	29.4	
**WUF-L-17-6-50.25	72"	50.25"	29.9	
WUF-L-17-7-24	84"	24"	29.0	
**WUF-L-17-7-26.25	84"	26.25"	29.6	
WUF-L-17-7-30	84"	30"	30.5	
WUF-L-17-7-36	84"	36"	32.1	
WUF-L-17-7-42	84"	42"	33.6	
WUF-L-17-7-48	84"	48"	35.7	
**WUF-L-17-7-50.25	84"	50.25"	36.3	
WUF-L-17-8-24	96"	24"	32.0	
**WUF-L-17-8-26.25	96"	26.25"	32.6	
WUF-L-17-8-30	96"	30"	33.5	
WUF-L-17-8-36	96"	36"	35.1	
WUF-L-17-8-42	96"	42"	36.6	
WUF-L-17-8-48	96"	48"	38.7	
**WUF-L-17-8-50.25	96"	50.25"	39.3	

DISCOUNTS
on orders over \$1,500.00. Call Ted Thorsen for details.

Vertical Beam Spacing	Maximum Frame Capacity/Lbs.
24"	14,800
36"	10,600
48"	7,600
60"	6,500
72"	5,500
84"	4,600
96"	3,900

Note: Maximum frame capacity is based on vertical beam spacing. See chart below.



Catalog Number	*Nominal Height	Frame Depth	Weight Lbs.	Price
WUF-L-17-10-24	120"	24"	40.7	Call
**WUF-L-17-10-26.25	120"	26.25"	41.6	for
WUF-L-17-10-30	120"	30"	42.8	Prices
WUF-L-17-10-36	120"	36"	45.3	
WUF-L-17-10-42	120"	42"	47.8	
WUF-L-17-10-48	120"	48"	50.0	
**WUF-L-17-10-50.25	120"	50.25"	50.9	
WUF-L-17-12-24	144"	24"	47.3	
**WUF-L-17-12-26.25	144"	26.25"	48.2	
WUF-L-17-12-30	144"	30"	49.3	
WUF-L-17-12-36	144"	36"	51.6	
WUF-L-17-12-42	144"	42"	54.0	
WUF-L-17-12-48	144"	48"	56.5	
**WUF-L-17-12-50.25	144"	50.25"	57.4	
WUF-L-17-14-24	168"	24"	55.6	
**WUF-L-17-14-26.25	168"	26.25"	56.7	
WUF-L-17-14-30	168"	30"	58.2	
WUF-L-17-14-36	168"	36"	61.5	
WUF-L-17-14-42	168"	42"	64.6	
WUF-L-17-14-48	168"	48"	67.4	
**WUF-L-17-14-50.25	168"	50.25"	68.5	
WUF-L-17-16-24	192"	24"	62.6	
**WUF-L-17-16-26.25	192"	26.25"	63.7	
WUF-L-17-16-30	192"	30"	65.1	
WUF-L-17-16-36	192"	36"	68.1	
WUF-L-17-16-42	192"	42"	71.1	
WUF-L-17-16-48	192"	48"	74.3	
**WUF-L-17-16-50.25	192"	50.25"	75.4	
WUF-L-17-18-00-24.00	216"	24.00"	66.6	
WUF-L-17-18-00-26.25	216"	26.25"	67.1	
WUF-L-17-18-00-30.00	216"	30.00"	68.5	
WUF-L-17-18-00-36.00	216"	36.00"	70.7	
WUF-L-17-18-00-42.00	216"	42.00"	73.1	
WUF-L-17-18-00-48.00	216"	48.00"	75.5	
WUF-L-17-18-00-50.25	216"	50.25"	76.4	
WUF-L-17-20-00-24.00	240"	24.00"	74.4	
WUF-L-17-20-00-26.25	240"	26.25"	75.1	
WUF-L-17-20-00-30.00	240"	30.00"	76.7	
WUF-L-17-20-00-36.00	240"	36.00"	79.4	
WUF-L-17-20-00-42.00	240"	42.00"	82.2	
WUF-L-17-20-00-48.00	240"	48.00"	85.1	
WUF-L-17-20-00-50.25	240"	50.25"	86.2	

Other upright heights available up to 240".

- * For actual height, add 1/8" for foot plate.
- ** 50 1/4" frame depth will accept std. 48" wide drop-in decks.
- ** 26 1/4" frame depth will accept std. 24" wide drop-in decks.

Choose the sizes that fit your space and load.

Call Ted Thorsen for assistance and suggestions

Beams — Lengths up to 144"

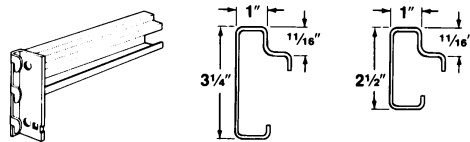
Beams

Beams are constructed of a cold formed steel step section with a heavy gauge, three lug hook connector welded to each end of the step section. This design provides a tight, boltless connection enabling easy assembly and adjustability... simply insert the three lug hook into the slots of the upright frame. The smooth face of beam enables easy labeling while minimizing exposed edges. The steps on the beams are designed to accommodate plywood or particle board drop-in shelves of standard dimensions.

Inverted beams are used to handle overlapping steel or wire decking. To order inverted beams, simply use the prefix WIB in place of WRB in catalog numbers.

Note:

Beam capacities are based on uniformly distributed loads on a pair of beams. Capacities that are shown as "AISI Spec" may have deflections greater than L/180.



Standard 3 3/4" Beams

Catalog Number	Beam Length	Capacity		Weight Ea. Lbs.	Supports Req'd.	Price
		AISI Spec	@L/180			
WRB-L-17W-325-48	48"	4,000	4,000	8.5	1	
WRB-L-17W-325-60	60"	3,200	3,200	10.3	1	Call
WRB-L-17W-325-72	72"	2,700	2,700	12.1	1	
WRB-L-17W-325-84	84"	2,300	2,300	13.9	1	for
WRB-L-17W-325-96	96"	2,000	1,900	15.7	2	Prices
WRB-L-17W-325-108	108"	1,800	1,500	17.5	2	
WRB-L-17W-325-120	120"	1,600	1,200	19.3	2	
WRB-L-17W-325-132	132"	1,500	1,000	21.1	3	
WRB-L-17W-325-144	144"	1,300	800	22.9	3	

Low Profile 2 1/2" Beams - Please Check Current Availability

Catalog Number	Beam Length	Capacity		Weight Ea. Lbs.	Supports Req'd.	Price
		AISI Spec	@L/180			
WRB-L-17W-250-48	48"	3,600	3,600	10.3	1	
WRB-L-17W-250-60	60"	2,900	2,900	12.6	1	Call
WRB-L-17W-250-72	72"	2,400	2,400	14.9	1	
WRB-L-17W-250-108	108"	1,600	1,000	21.8	2	for
WRB-L-17W-250-120	120"	1,400	800	24.1	2	
WRB-L-17W-250-132	132"	1,300	700	26.4	3	Prices
WRB-L-17W-250-144	144"	1,200	600	28.7	3	

* Add two additional Lateral Supports when they are used to support particle board or smooth steel decks.

DISCOUNTS
on orders over \$1,500.00. Call Ted Thorsen for details.

Lateral Support

Sixteen gauge, galvanized "A" - shaped supports rigidly secure and fasten the beams together while supporting shelf material. To install, simply rotate the support into the edges of the beam. Supports can be located anywhere along the beam's length to provide additional support where it is needed most... no predetermined slots or holes to limit support location. Standard finish is unpainted galvanized steel.

Inverted lateral supports should be ordered by using the prefix WIS in place of WSS in catalog numbers.



Catalog Number	Beam Height	Frame Depth	Weight Each/Lbs.	Price
WSS-L-325-24	3 1/4"	24"	2.2	
WSS-L-325-26.25	3 1/4"	26 1/4"	2.4	Call
WSS-L-325-30	3 1/4"	30"	2.7	
WSS-L-325-36	3 1/4"	36"	3.3	for
WSS-L-325-42	3 1/4"	42"	3.8	
WSS-L-325-48	3 1/4"	48"	4.4	Prices
WSS-L-325-50.25	3 1/4"	50 1/4"	4.6	
WSS-L-250-24	2 1/2"	24"	1.6	
WSS-L-250-26.25	2 1/2"	26 1/4"	1.7	
WSS-L-250-42	2 1/2"	42"	2.7	
WSS-L-250-48	2 1/2"	48"	3.2	
WSS-L-250-50.25	2 1/2"	50 1/4"	3.3	

Other beams and support sizes available up to 72" long.

Row Spacers and Wall Spacers now Available.
Sizes 2" to 60" - Call for prices.

How to Determine Column Centers

