

Ted Thorsen Belt Conveyors ■ Slider Bed ■ Roller Bed

Well Engineered Equipment ■ Designed For Years of Daily Factory Use



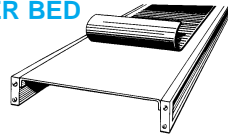
Flexibility of construction and design allows our standard units to be easily adapted to your belt conveyor requirements. Whether center or end drive, roller or slider bed, our conveyors are complete units which are easy to set up or assemble. Whether you use one short belt conveyor or are considering a complex belt conveyor system, Ted Thorsen conveyors can move your products. Typical applications: systems, worktables, assembly lines, transportation lines, mailing lines, shipping and receiving lines.

*STANDARD WIDTH DIMENSIONS

Overall Conveyor Width	OW/C	13 1/2"	15 1/2"	17 1/2"	19 1/2"	21 1/2"	23 1/2"	25 1/2"	29 1/2"	35 1/2"	41 1/2"
Back to Back of Side Frames	B/B/F	11"	13"	15"	17"	19"	21"	23"	27"	33"	39"
Nominal Length of Roller	N/L/R	10"	12"	14"	16"	18"	20"	22"	24"	30"	36"
Actual Width of Belt	B/W	8"	10"	12"	14"	16"	18"	20"	24"	30"	36"

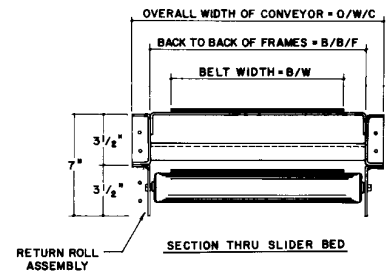
* (See Drawings at Right)

Basic Design SLIDER BED

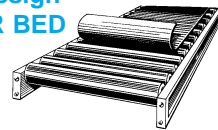


Application: Generally used to convey light weight loads over short distances where sliding friction will not appreciably affect unit efficiency.

Important Dimensions SLIDER BED

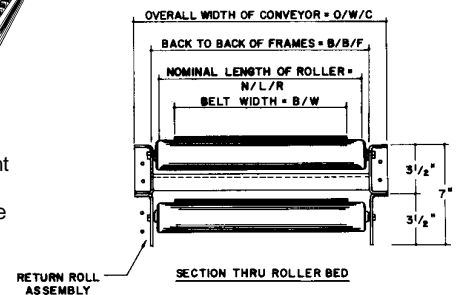


Basic Design ROLLER BED



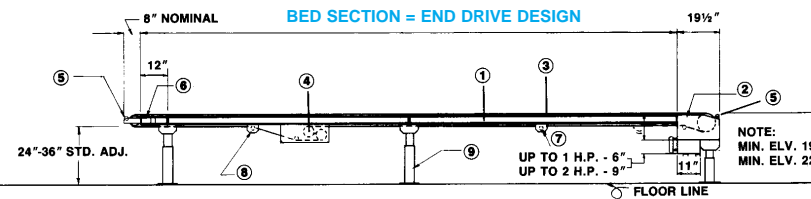
Application: Generally used to convey medium to heavy weight loads over longer distances where roll bearings can improve conveyor efficiency thereby keeping horsepower requirements at a minimum.

Important Dimensions ROLLER BED



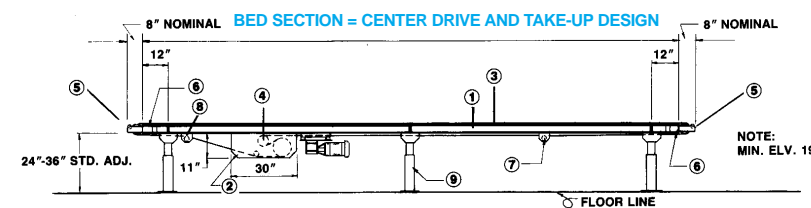
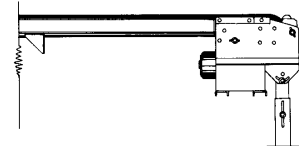
Ted Thorsen will provide prompt quotes to your exact layout and product transport requirements. Call or Fax with your specifications.

Belt Conveyor Features and Design Choices



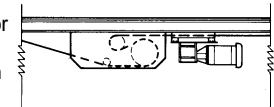
END DRIVE

Application: Recommended for belt travel in one direction only; over short distances.



CENTER DRIVE

Application: Recommended for belt travel in two directions. Also used for longer units with medium to heavy loads.



Led Ted Thorsen recommend the correct motor/drive design configuration for your requirement. Prompt pricing to your specifications. Prices begin at \$1,550.00 complete for 10' units (8" belt). Discounts available for larger projects.

- Beds:** Side Frames: 3/2" x 1 1/4" x 10 ga. galvanized
Slider Insert: 12 ga. galvanized-bolted to side frame
Bed Rolls: 2" x 16 ga. rolls with grease packed ball bearings on 3, 4, 6, 8" centers.
Note: Optional Box Bed available. Consult factory. Lengths from 10' in 5' increments.
- Drives:** *End Drive includes: • "C" Face Motor and Reducer. • Drive Pulley 8" diameter crowned and lagged with 1 1/8" C.R. shaft. • Bearings are self aligning. • Snub Roll 2 1/4" diameter x 10 ga. with heavy duty oiled for "Life" bearings. • Chain - #RC 50
Center Drive: Same as above except Drive includes a center take-up (see #4 below)
- Belt:** Standard belt is an interwoven polyester (IWP) 120 Wt., friction surface both sides. Other types of belting available for special applications. For belt widths see chart above.
- Center Take Up:** This "S" configuration unit is part of all center drives and is available as an option with End Drive Conveyors. Specifically recommended for use with units over 40' in length or where End Roll cannot be adjusted.
Auxiliary Center Take-Up: Consists of (2) 4 1/4" diameter pulleys, one stationary and one moveable to provide approximately 15' of belt takeup.
Center Drive Take-Up: As above except stationary pulley is drive pulley, 24" of take-up provided.
- "Pop-Out" Roll:** Supplied as a standard safety feature at both ends of belt conveyor.

*Motor/Reducer mounted externally, NOT as shown.

- End Roll Take-Up:** Channel framework construction with slider bed insert as standard (roller bed construction also available). Take-up adjustment by means of 1/2" x 10" long screws mounted outside of conveyor frame to control proper tension on belt. Take-up pulley is 4 1/2" diameter crown-faced, mounted in 1" self-aligning bearings.
- Return Roll Assembly:** Brackets with return roll of 2" diameter, 16 gauge steel tubing, mounted on 10'-0" centers.
- High Tension Rolls:** Heavy duty rolls to provide proper path for belts feeding into or away from center take-ups.
- Supports:** Channel type with height adjustments of 24" to 36" top of stand. Other heights available.
- Speed:** Standard units supplied with belt speed of approx. 63 feet per minute. However, any belt speed of 50 to 70 feet per minute can be furnished at no extra cost. Variable speed drives with ratio up to 3 to 1 are available (mechanical). SCR variable speed drives (20:1) also available.
- Electrical Controls:** Controls are furnished as accessories - not wired or installed on unit. Available are push button stations with magnetic starter, either single direction or reversing. Also manual type drum switch reversing or non-reversing at one end of unit only. Limit switch controls available as Accessories - not wired or installed.
- Guard Rails:** Pipe style adjustable or channel type adjustable as standard. Other types can be supplied upon request.

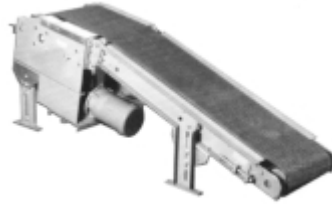
Inclined Belt Conveyors - Slider Bed and Roller Bed Designs

FLOOR TO FLOOR

Optional Underslung Center Take-Up and Power Feeder Illustrated

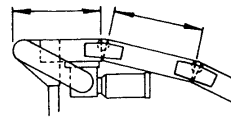


BOOSTER

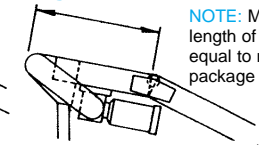


Important Options to Aid Climbing and Angle Transitions.

Double Nose-Over



Single Nose-Over



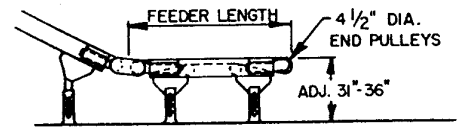
NOTE: Minimum length of nose-over equal to maximum package length.

Permalift: The floor to floor belt conveyor to solve your between floor handling problems. Permalifts are designed to handle packaged or solid goods (caution when handling coated products or polyethylene containers). Permalifts are the answer for your inclined handling problems. A wide choice of standard models and belt widths are available as shown below.

Speedbooster: The Speedbooster conveyor is designed to assist in short incline handling problems. Speedboosters are an efficient power conveyor which can be used:

- To boost products in a gravity flow system where elevation has to be regained.
- To move small products in between manufacturing operations or to facilitate stacking of these goods.
- To boost products from ground level to dock or truck bed height.

Bottom Power Feeder



Slider and Roller Bed Units:

For elevating or lowering cartons, boxes, bags, etc.

Features:

- Heavy duty engineering.
- All units shipped in modular assembled lengths.
- Take-up end pulley and drive completely assembled and mounted in bed sections.
- Intermediate beds bolt together easily.
- Sizes to match your needs.
- Specials and new facilities quoted.

Standard Specifications:

Beds: Formed steel channel from 16" to 54" wide. Beds over 30" wide are 12 ga. channel and reinforced for extra strength.

Belts: Standard rubber rough top. Widths from 12" to 48". Other belts readily available.

MODELS AVAILABLE (ROLLER OR SLIDER BED)

PERMA LIFTS

Model	Net Vertical Lift	Appr. Conv. Length*	Angle of Incline	Approx. Horiz. Dis.
13	6' - 0"	15' - 0"	25°	14' - 1"
15	7' - 0"	17' - 0"	25°	15' - 9"
18	8' - 0"	20' - 0"	24°	18' - 9"
20	9' - 0"	22' - 0"	25°	20' - 3"
23	10' - 0"	25' - 0"	25°	23' - 3"
25	11' - 0"	27' - 0"	25°	25' - 3"
28	12' - 0"	30' - 0"	24°	27' - 9"
30	13' - 0"	32' - 0"	25°	29' - 7"

BOOSTERS

Model	Net Vertical Lift	Appr. Conv. Length*	Angle of Incline	Approx. Horiz. Dis.
3	1' - 6"	5' - 0"	20°	5' - 0"
5	2' - 6"	7' - 0"	22°	7' - 0"
8	3' - 6"	10' - 0"	22°	9' - 8"
10	5' - 0"	12' - 0"	26°	11' - 3"

*Approximate conveyor length includes bed length, end roll assembly and single noseover delivery.

Call for prompt pricing to your layout and specification requirements.

Slider Bed Powered Belt Conveyors at Work

Call Ted Thorsen to discuss your application and requirements — and receive a prompt price quote.



Use Power Conveyor to feed work to a central collecting station in a controlled and orderly manner.

You can reduce overhead and improve thruput time if operations in your sewing room lend themselves to conveyor removal of finished bundles or subassemblies.



Match the conveyor to the job with adjustable heights, guard rails, electric eye controls, inclines, curves, and reversible or variable speed flow. Those are just a few of the many available Ted Thorsen conveyor options.

Photos courtesy of Anvill Knitwear — Whiteville, N.C.

"LITTLE-TUFFY" Lightweight Portable Belt Conveyor

Standard Specifications:

Lengths: 9', 11' and 13'.

Width: 12" wide rubber rough top belt on 18" wide steel bed; or 16" wide belt on 20" bed.

Drive: 3/4 HP 1/60/115 Volt AC motor-reducer drive.

Supports: Adjustable wheeled stand with 8" dia. semi-pneumatic wheels at drive end. Lift handles furnished for opposite end.

Capacity: 300 lbs. distributed load at 60 ft./min.

Electrical Controls: Drum reverse switch wired and mounted to side of conveyor with remote rod. 8' cord and grounded safety plug furnished.

FEATURES:

- Ideal for handling cartons and bags from floor to mezzanine; trucks to platform; and stairway applications.
- Rugged, yet lightweight
- Can be moved by one person
- Can be stored in upright position



	9'	11'	13'
12" Belt / 18" Bed	-----	CALL FOR PRICES	-----
16" Belt / 20" Bed	-----	CALL FOR PRICES	-----

V-500 Portable Belt Conveyor

Fast, Low Cost for Loading, Unloading, Stacking and Boosting Cartons, Boxes, Bales and Bags.

SPECIFICATIONS:

- Popular sizes: 9-11, and 13 feet long.
- 12" belt on 18" frame or 16" belt on 20" frame.
- Drive 3/4 HP motor/reducer with chain and sprockets.
- 115 volt, single phase, 60 cycle AC; plugs into any outlet.
- Belt speed: 50 feet per minute - reversible.
- Capacity: distributed load 450 lbs. Unit loads to 150 lbs.
- Drum type reverse switch with remote control rod - operates from both ends.



- Heavy duty ball bearings throughout.
- Hydraulically adjustable undercarriage support, easy hand pump angle setting.
- 8 foot long rubber power cord with safety plug.
- 1" diameter wood bottom cleats mounted in pairs on 6 ft. centers along belt.
- Low end stand - adjustable "H" type with 8" diameter wheels and side wheel brakes.
- Rubber Rough top belt.

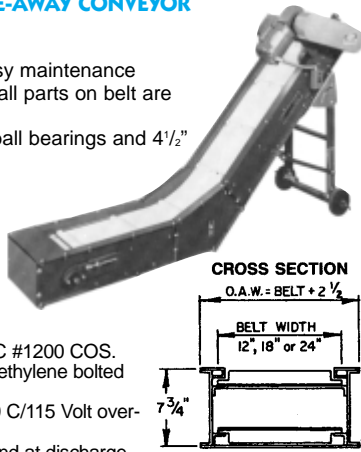
Length	12" Belt on 14" or 16" Bed	16" Belt on 18" or 20" Bed	Max. Ht.
9'	-----	CALL FOR PRICES	80"
11'	-----	CALL FOR PRICES	96"
13'	-----	CALL FOR PRICES	108"

Special Application Conveyors-Shipped Ready To Use On Arrival

CL-450 - PARTS TAKE-AWAY CONVEYOR

EXCLUSIVE FEATURES:

- All bolted construction for easy maintenance
- Molded side flanges to keep all parts on belt are available (Type 102)
- Heavy duty design includes ball bearings and 4 1/2" dia. end pulleys.



STANDARD SPECIFICATIONS:

Belts: 12", 18" and 24" white PVC #1200 COS.
Cleats: 1" high solid UHMW polyethylene bolted on 12" centers.
Drive: 1/3 HP gearhead; 1 PH/60 C/115 Volt overhead mounted.
Support: Adjustable wheeled stand at discharge end.
Frame: 7 1/2" high formed steel channel
Controls: On/off switch wired and mounted with 8' cord and plug.
Speed: 50 ft./min. standard (other fixed and variable speed drives available).
Discharge Heights: 44", 52 1/2", 60 1/2"

Inclined Length	Top Under Pulley	Horiz. Floor Distance
48"	39 1/2"	6' - 6 1/2"
60"	48"	7' - 3"
72"	56 1/2"	7' - 11"

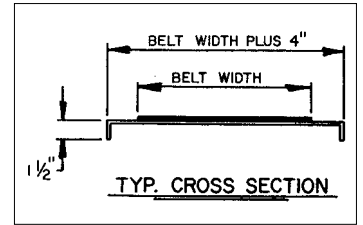
Belt Width	Incline Length	Addl. Ft. Add \$/Ft.	Optional 24" Top Nose Over
12"	48"		
18"	60"		
24"	72"		

----- CALL FOR PRICES -----

OPTIONS: 3 Phase - Add \$108.00 (No Plug) 30° Trans. Angle - Add \$81.00

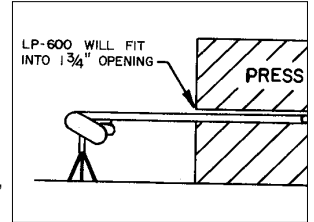
LP-600 - LOW PROFILE PARTS CONVEYOR

For conveying parts away from:
Injection Molding Machines; Stamping Presses; Extruders; Inspection and Assembly Lines, also OBI and Straight Sided Presses



STANDARD SPECIFICATIONS:

Length: 5'6"; 7'6"; 9'6".
Belt: 8" or 12" wide black PVC. Oil resistant.
Bed: Sturdy 10 ga. formed pan; 12" or 16" wide.
Support: Adjustable height tripod at one end.
Drive: 1/4 HP 115/1/160 gearmotor with positive chain drive and fully enclosed chain guard.
Speed: 45 ft./min. standard.
Controls: On/off switch wired and mounted with 8' cord and plug.
Optional: Overhead mounted drive positioned to suit your needs.



Length	8" Belt - 12" Bed	12" Belt - 16" Bed
5'6"		
7'6"		
9'6"		

----- CALL FOR PRICES -----

If you have a special application that is not covered here, please call Ted Thorsen... we can assist you.

Model CL-300 - INCLINE CLEATED/MOLDED BELT CONVEYOR - Call [TM] for pricing.

STANDARD SPECIFICATIONS:

Widths: Standard belt widths are 8" to 36"

Belts: PVC oil resistant with vulcanized full width cleats spaced every 12 inches (1/2" to 3" ht. cleats). Call [TM] to discuss.

Beds: 12" to 42" wide; formed channel slider bed with 3" high bolted on angle guards, full length next to belt.



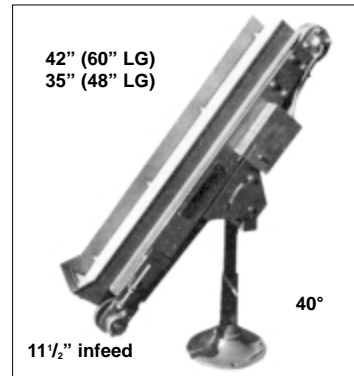
Drives: Overhead mounted 1/3 H.P. 1/60/115 Volt AC gearmotor.

Pulleys: Drive pulley 6" diameter crowned and lagged. Tail pulley 4 1/2" diameter.

Controls: On Off switch wired & mounted. Rear flapper at tail end is standard.

Model CL-200 - Call [TM] for pricing. MINI-PARTS CONVEYOR

Under cantilevered discharge area of injection molding machines to convey parts to larger containers. Special motorized head pulley design.

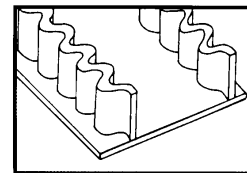


STANDARD SPECIFICATIONS:

Length: 48" or 60" long
Belt: 8" and 12" wide black PVC with 1" cleats on 12" centers.
Beds: Formed steel channel 12" and 16" wide.
Guard Rails: 2" high angle & back flapped hopper
Support: Single pipe pedestal base support.
Drive: 115/1/60 fractional H.P. with 8 ft. cord & plug.
Speeds: 45 F.P.M. standard. Other speeds available.
Take-Up: Screw take-ups are provided at tail pulley to insure proper belt tension.
Electrical Controls: On/Off switch with thermal overload. Wired and mounted with 8' cord and plug.

Model CSW CORRUGATED SIDE-WALL INCLINED CONVEYORS

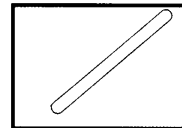
- Move loose flowing materials, plastic, metal, granular
- Ideal for handling small parts, scrap, bags, bulk material
- For recycling cans, bottles, paper to feed shredder or compactor
- All sanitary design available with white FDA belt for food products



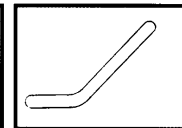
Corrugated Side Wall: Belt widths 12", 18", 24", 30", 36"

Belt Materials: PVC, RMV, Nitrile Rubber

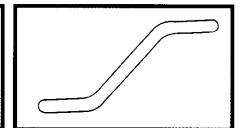
Side Wall & Cleat Heights: From 1" to 3" HT. with Cleats on 12" - 24" - 36" centers.



Style S I
Straight-Incline



Style H I
Horizontal Incline



Style H I H
Horiz. Incline Horiz.



Fully vulcanized cleats and side walls prevent entrapment of material under belt.

Call [TM] for additional options and pricing to match your operating specifications.

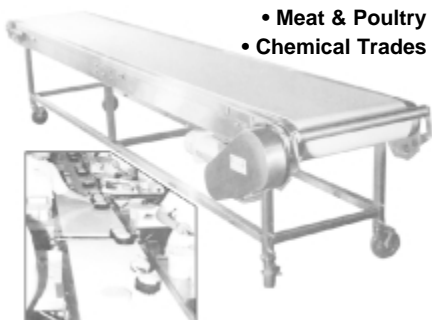
Specialty and Sanitary Conveyors • Standard • Modified

• Standard or Stainless • Prompt Pricing to Your Specification • Systems Quoted

SSC SERIES Stainless Steel

Sanitary Design Conveyors

- SERVICING:**
- Food Handling
 - Pharmaceutical
 - Meat & Poultry
 - Chemical Trades



- Horizontal & Inclined Belt
- Flat Top Chain
- Cleated & Sidewall Belt
- Wire Mesh

SSC-300 Stainless Steel

Inclined Cleated Belt Conveyor

- White food grade belt with fully vulcanized cleats (1", 2", or 3" height cleats.)
- Stainless steel bottom pan for belt return.
- Infeed hopper and discharge chute available.



SSC-200 Stainless Steel

Mini-Parts Conveyor

- Food grade belt with 1" height cleats vulcanized to belt on 12" or 6" centers.
- Belt widths 4" to 16" wide.
- 48" or 60" long.
- Motorized drive pulley.
- Stationary or portable design.



FTC or SSC -760-R

Straight Running Flat-Top Chain Conveyors PLAIN OR STAINLESS

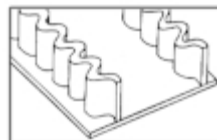
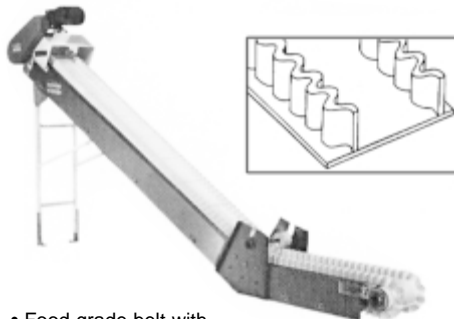


**SANITARY,
EASY-
CLEAN**

- All bolted pre-assembled modules.
- Guide rails fixed or adjustable type.
- Drives: fixed or variable speed.
- Motor-reducer drive with positive sprocket and roller chain drive.
- End modules: sprockets keyed to 1" dia. steel shafts mounted in self-aligning flange ball bearings.
- Top plates furnished to suit customer needs - steel and stainless steel - 3 1/4", 4 1/2", 6", & 7 1/2" thermoplastic - 3 1/4", 4 1/2", 6", 7 1/2", 10", 12".

SSC-450 Stainless Steel

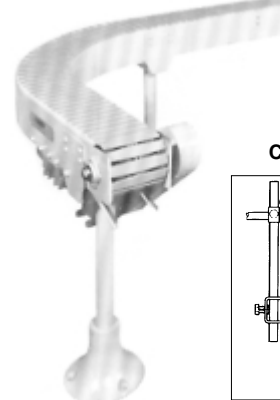
Corrugated Sidewall Takeway Conveyor



- Food grade belt with vulcanized cleats and sidewalls 1", 2", or 3" height cleats and walls.
- All bolted stainless steel frame for easy maintenance and in-field changeover.
- Available in a straight incline or with horizontal infeed and discharge section.

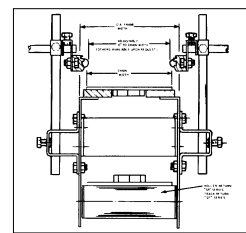
STYLE "SF"

Side-Flexing Chains



For uninterrupted flow around corners (no deadplates or turntables)

CROSS SECTION



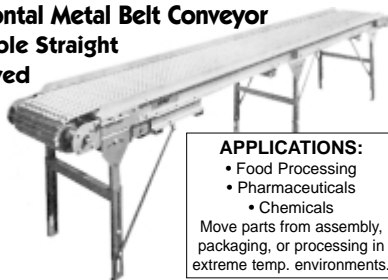
SR & SF SERIES

Chain Width: 3 1/4" O.A. Width: 4 3/4"

Chain width: 4", 4 1/2", 6", 7 1/2", 10" O.A. Width: +1"

MODEL MH-400

Horizontal Metal Belt Conveyor Available Straight & Curved



APPLICATIONS:

- Food Processing
- Pharmaceuticals
- Chemicals

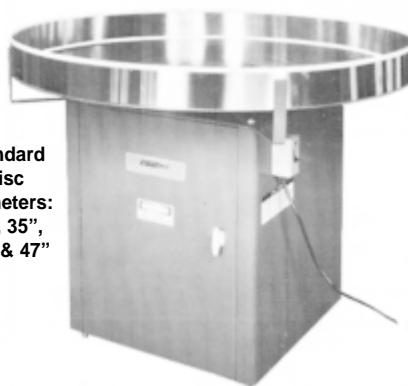
Move parts from assembly, packaging, or processing in extreme temp. environments.

Standard Specifications:

- Lengths:** 11' to 51'. (Longer or shorter units available upon request.)
- Widths:** Standard belt widths are 12" to 30". Add 6" for overall frame width. Wider units available. Flat galvanized steel wire. 1/2" x 1" Driven by multiple cast iron sprockets.
- Belts:** Roller bed with 2" dia. x 16 ga. steel ball bearing rolls spaced every 6". Top of belt extends approximately 1/2" above rails.
- Frames:** Formed galvanized steel channel side rails. 14 ga. 6 1/2" high. Welded cross angle braces. Gearhead motor type. (Specify voltage.)
- Drive:** Structural channel adjustable from 31" to 36" in height.
- Speed:** Any desired fixed speed from 20 to 100 ft./min.

RT-820-AC

Rotary Accumulator Table



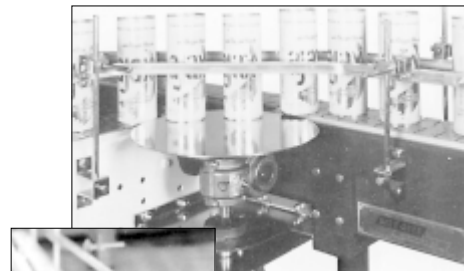
Standard Disc
Diameters:
30", 35",
41", & 47"

Placed at end of conveyor line, the accumulator receives and accumulates containers, bottles, vials, jars, and cans away from filling, capping and labeling operations. Acts as pack-off station for several operators and accumulates for operators inspection and removal.

Optional Right Angle Transfer Disc

Provide right angle turns in a minimum area.

Smooth, continuous movement of cans/bottles/jars/packages through: **Filling • Labeling • Capping • Inspection • Assembly • Accumulation • Packing**



"Uni-Just" Guard Rails Feature

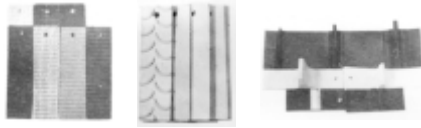
Non-Marking nylon insert in extruded aluminum housing, and provide complete freedom of guard positioning. Available in double or single strand.

Power Conveyor Options and Popular Design Choices

Belts other than standard white PVC #1000 C.O.S.

TT offers a wide variety of belts for many different applications. Consult factory with your special requirements.

White food grade belting can be supplied for either horizontal or incline applications. Extreme temperature belting is also available.



Drive Locations



Center Drive & Take-Up

Recommended on long running incline & horizontal conveyors. The center drive & take-up is also used for reversible conveyors and in systems where standard end take-ups are not practical.



Side Mounted Drive

Used primarily on conveyors that are handling tall objects or conveyors that are too low to the floor to accommodate an end drive or a center drive.



Overhead Mounted Drive

Used primarily on parts handling conveyors that are dumping into bins, etc. Where a standard end drive would prohibit the conveyor from over hanging the bin.

Guard Rails



The basic guard rails offered by TT are the fixed angle type and the adjustable channel type. The fixed angle type bolts to the top of bed close to the belt for small parts. The adjustable channel type is adjustable up and down as well as in and out to accommodate various different carton sizes.

Side Leaf Tables



Side leaf tables provide a sturdy work surface for assembling, inspecting, packing, etc. Tables can be bolted to one or both sides, full length, or anywhere along conveyor as required. Available 12" and 18" wide.

Self Cleaning Pulleys



Self cleaning pulleys are used when handling granular or powdery material. The construction of the pulley prevents product from caking up on the bottom of the belt. Not recommended as drive pulley.

Variable Speed Drives

Mechanically adjustable

A 2.8:1 speed ratio (1) is achieved with a "Hi-Lo" motor base and a spring pulley. The operator controls the speed by increasing or decreasing the spring pulley tension by means of a hand crank. A 6:1 speed ratio (2) involves two spring pulleys. The speed is controlled by increasing the tension on one pulley while decreasing the tension on the other.



Electrically adjustable SCR motor has a 20:1 speed ratio. It is fully reversible and controller can be mounted directly to motor, or remotely mounted along conveyor length. Available in single phase only.



Adjustable Speed Vari-drive motor can be supplied in a 6:1 ratio at 1/2 H.P. and a 10:1 ratio at 1/2 H.P. and up. Fast speed selection is provided by means of an easy turn handwheel. Larger H.P. motors available in 3 phase only.

Take-Ups

Extended end take-up is used on long conveyors where an underslung take-up cannot be used. Like the underslung take-up, the extended end take-up also allows for 10" of adjustment.



Auxiliary belt take-up is mounted to the underside of conveyor and can be mounted anywhere along length of machine. This provides approx. 10" of adjustment and is used in systems where machinery at both infeed & discharge ends would prohibit use of a standard take-up.

Portable Supports



Portable supports allow conveyors to be moved into and out of production lines, loading docks, molding machine cavities, etc. 3" dia. and 4" dia. swivel casters available from stock. For special requirements consult factory.



Dead plates mount quickly and easily to provide a smooth transition from pulley to pulley. Most commonly used between gravity feeder and incline conveyor, or in systems involving smaller parts which could lodge between pulleys.



TT offers a wide variety of electrical controls. The basic line of readily available controls is as shown.

- 3 Ph. non-reversing mag. starter
- 3 Ph. manual starter
- 3 Ph. reversing mag. starter
- 1 Ph. or 3 Ph. drum reverse switch
5. forward-reverse-stop pushbutton
6. 1Ph. on-off switch
7. start-stop pushbutton

Floor to Floor Platform Lifts and Continuous Vertical Conveyors from Ted Thorsen add an extra dimension to handling efficiency and speed.

— Call or FAX to discuss your requirements, and receive a prompt quote from Ted Thorsen.

Continuous vertical conveyors provide high-speed up-and-down service; cycles to 25 loads/minute with maximum 80 ft. vertical travel.



Auto parts travel quickly up to the service/repair level in the ultra modern Ertlely Auto World Complex in Wilkes-Barre, PA



How vertical conveyors increase plant efficiency:

- Provide multi-level transportation in minimum space — product travels straight up and down, no incline required.
- Cut floor space requirements up to 90%!
- Utilize vacant air space above the floor level. Ideal for operations that are auto-matic or require little or no supervision.
- Open up mezzanines and balconies to more effective use.
- Transport up and over machinery, aisles or other obstacles . . . avoid expensive production changes.
- Clear floor areas for more efficient flow of fork lifts, pedestrian traffic, etc.
- Provide a high degree of flexibility in plant layout.

Chain speed.....Up to 100 FPM
Rate.....Up to 25 loads/min.
Lift Height.....Up to 80 ft.
Controls.....Programmable controllers or relay logic

Information required for quotation:

1. Description of products including size, weight and contact surface.
2. Maximum handling rate (quantity per minute)
3. Infeed and discharge elevations
4. Plant electrical requirements
5. Special conditions, such as extreme temperature, moisture, etc.
6. Direction of travel (up, down, or reversible)

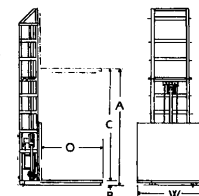
Electric/hydraulic platform lifts take big bulky loads between floors with ease.



A floor to floor TT installation at Ertlely Auto World moves transmissions, engines, and bulk loads to the repair/service level and brings new stock down to the picking level. These units enjoy years of trouble-free service.



Capacity: 500 to 50,000 lbs.
Platform: 2' x 2" to 30' x 30"



Dimensions and design features can be varied to your exact specification for each job.

Comply with ANSI B20.1 and OSHA codes.

Not subject to elevator codes Federal & State Laws Require Enclosures & Gates

Determine Your Specifications

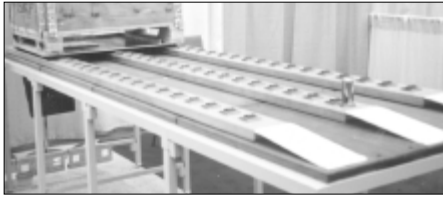
- A. Platform Raised Height: _____ in.
 - B. Platform Lowered Height: _____ in. (Averages 5")
 - C. Platform Travel: _____ in. (Raised Height less Lowered Height)
 - O. Platform Length Dimension: _____ in.
 - W. Platform Width Dimension: _____ in.
1. Rated Capacity: _____ lbs.
 2. Lift Speed: _____ FPM
 3. Power: _____ Volts, _____ PH, _____ Hz
 4. Controls: Qty. _____ Self-Maintained, _____ Deadman NEMA _____ Enclosure
 5. Mounting: _____ Surface, _____ Pit
 6. Platform Enclosures
 7. Landing Enclosures

Floor Roller System with Interchangeable Ball and Roller Inserts.

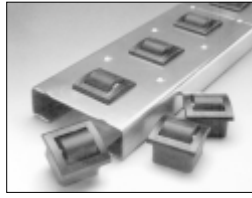
Use for moving air cargo containers in your dock area.


- Ideal for floor or deck mounted transfers • Skids • Pallets • Crates • Assemblies • Flat Bottom Cartons
- Trailer Loading and Unloading • Accumulation Areas

Order everything you need to set up an efficient customized transfer area.



Track assemblies are flexible enough to match your plant or warehouse requirements. Layout changes are simple and direct. But don't let the ease of installation fool you. These units are tough enough to accommodate a 96" x 125" container weighing up to 15,000 pounds.*



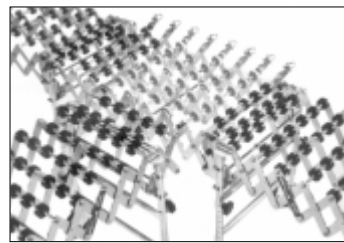
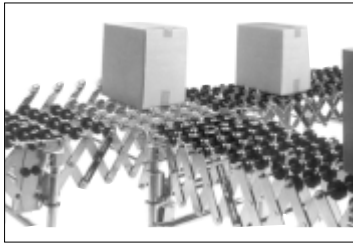
Add ball units or roller cubes as needed. Just drop in and you're ready to start work. Components are priced at right. There are three roller styles. The type you choose depends on the application, calculated loads and plank configuration. For information about plank configurations, roller capacities and weight limits call .

Product Description	Part Number	Unit Price
Roller cube - light duty	K0100	[Call]
*Roller cube - medium duty	K0105	[Call]
*Roller cube - Heavy duty	K0110	[Call]
Rollers are 1 1/8" face x 1 1/4" diam		
Cube retaining ring - fits inside	K0007	[Call]
Ball Transfer Cube	K0050	[Call]
Steel Planking 5" Wide x 1 1/2" High x 1/16" Thick	KTC-Plank	[Call] per 12 foot length with cube holes & mounting holes
12" loading ramp	Ramp	[Call]
Complete 53' long trailer drop-in system Call for Price		

Note: Rollers and balls fit into 1 1/4" square openings in the track.

New Nestaflex "T" Junction Allows Cross Conveyor Movement

Utilizing special cross action wheels that work in 2 directions. The innovative design of the Nestaflex® "T" Junction enables material handlers to easily transfer cartons from one flexible conveyor to another - at a perpendicular junction. Perfect for all cross-conveyor functions, the "T" Junction connects to conveyors of different widths and can work with full-gravity, gravity/power and full-power conveyors.



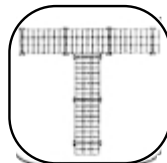
Rely on the "T" Junction to expedite receiving, sorting and feeding - especially with packaging machinery, processing machinery, and bulk mail processing. Highly adaptable, the "T" Junction is able to cross a conveyor line without going under or over it. It can be manufactured as an integral part of a conveyor or as an attachable unit.

Features and Benefits:

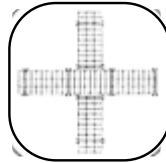
- Enables perpendicular transfers from one conveyor to another
- Allows cross-conveyor functions.
- Compatible with many types and widths of conveyors.
- Fully portable for multi-applications.

Applications:

- Packaging machinery
- Mainline shipping and receiving
- Processing machinery
- Bulk mail processing



perpendicular transfer



cross conveyor

Specifications:

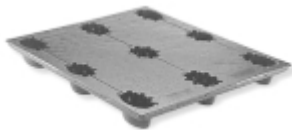
- Capacity up to 275 pounds per lineal foot lineal foot
- Widths: 14 inches to 30 inches.
- Compatible with full-gravity, gravity/power and full-power conveyors.
- Available as an integral part of a conveyor or as an attachable unit.

T-Junction Pricing

- Integral Section that is part of a conveyor when delivered - [Call for price](#) (See Pgs #189 and #190)
- Stand-Alone, attachable, independent unit please specify required size and height - [Call for price](#)

Big Pak Pallets are Roller Conveyor Compatible

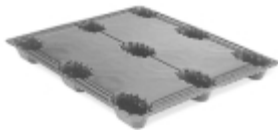
Lightweight



DC2-4048

Choose the Size & Design that Meets Your Handling Needs

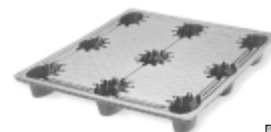
Economical



DC1-4048NLT



Durable



DC4 Series

Roller Spacing will determine conveyorability of these pallets.

Useful



Loadlocker Stabilizer

Big Pak advantages, including the patented thermoforming process

- Patented twin-sheet thermoformed plastic pallets outperform and outlast wood, thereby increasing trip life.
- Exceeds the Grocery Manufacturers Association (GMA) standard 2,800 lbs.
- Offers the ultimate in product protection by eliminating costly damage caused by broken pallet decks, splinters and nails.
- Steel-reinforced bottom runners enable safe, efficient travel on belt, roller, wheel, and other conveyors.
- Remarkably lightweight to handle easily, help reduce work-related injuries and provide cost-effective shipping.
- Patented staggered pinch design provides increased structural integrity against damage from fork impact.
- 100% recyclable, UV-resistant plastic performs in temperature extremes from 0 to 120 degrees F.
- Leg drain holes eliminate water build-up.
- Grip-Lik™ skid-resistant textured surface holds your load firmly on the pallet.
- Reinforced fork entry resists damage and guides fork tines into proper position.
- Customized optional features available.
- See page 69 for pricing by quantity including minimums and available options.

Fairbanks Scales are Factory Calibrated and Delivered Ready for Quick Set-Up

• Easy to Use • Shipping Rooms • Packing Lines • Factory Floor • Warehouse



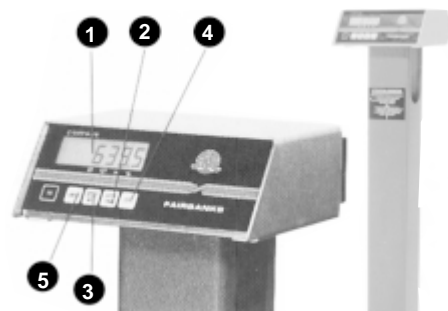
Portable Beam Scales Models 55652, 55653, 55789

The Model 55000 Series, a Fairbanks classic, is a rugged and economical scale for industrial and commercial general utility weighing needs. The large platform and cast iron construction make this scale ideal for a variety of weighing applications.

Specifications:

Model No.	Capacity	Price/ea.
55652	1,000 x .5 lb.	[Call]
55653	500 x .2 kg.	[Call]
55789	2,000 x 1 lb.	[Call]

Approvals: Meets or exceeds all requirements of the National Institute of Standards and Technology Handbook 44 for use in commerce.



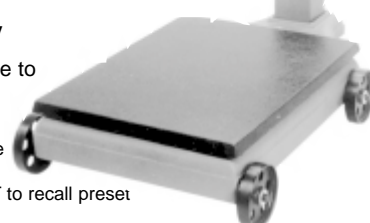
Price: [Call]

Fairbanks Digital Utility Scale — Model 58932 - 1,000 lb./500 kg. Capacity

Fairbanks has combined today's electronics with the time-proven mechanical features of its portable beam scale to create the ultimate in general utility weighing.

- Bright, Easy to Read Display:** Highly visible .7" high liquid crystal weight display is easy to read even in direct sunlight.
- Auto Tare:** Makes it easy to establish tare. Simply push to AUTO TARE button to enter into scale memory the weight of the empty container on the scale platform.
- Gross/Net:** Net weight of container contents quickly determine by placing object on the platform and pushing GROSS NET to recall preset container tare weight from indicator memory.
- Push Button Zero:** To re-zero the scale, simply push a button. No fine tuning adjustments to make to keep empty scale at required zero indications.
- Push Button On:** Automatic shut-off (sleep mode) when scale not in use.

Economical This unit is designed for rough service. This instrument is battery powered by six easily replaced standard C cells. AC adapter provided standard as alternative power source.



Announcing Our NEW Aegis Floor Scale Top U.S. Made Quality From Fairbanks

AEGIS Series Floor Mount Packages

- Low Profile, 3" high design
- Capacities ranging from 30" x 30" - 1,000 lb. capacity to 5' x 7' - 10,000 lb. capacity
- All sizes and capacities available in mild steel or stainless steel
- Constructed for your most demanding weighing needs using 1/4" thick deck plate welded over Fairbanks unmatched structural rib design for added strength
- 100% end loading with 150% overload protection
- Combined with IND-HR2300-1 Indicator to give you many extra features:
 - RS232C output standard
 - Optional Time and Date module that is Y2K compliant
 - Full numeric keypad
 - Mountin bracket standard
- Meets NTEP standards for weighing equipment
- Optional Stainless steel indicator available - Call TT for pricing
- Ramps and bumper guard accessories available - See below.



Floor Scale



Read-Out

Ramp Accessories

Model #	Description	Price/Ea.
64058	30" Ramp (A36 Steel)	[Call]
63751	3' Ramp (A36 Steel)	[Call]
63753	4' Ramp (A36 Steel)	[Call]
63755	5' Ramp (A36 Steel)	[Call]
64058	6' Ramp (A36 Steel)	[Call]

Bumper Guard Accessories

Model No.	Description	Price/Ea.
72198	3' bumper guard	[Call]
72194	4' bumper guard	[Call]
72190	5' bumper guard	[Call]
72196	6' bumper guard	[Call]
72192	7' bumper guard	[Call]
72200	8' bumper guard	[Call]

Aegis BASIC Floor scales with IND-HR2300-1 Read-Out

Model No.	Description	Price/Ea.
C5F-R3400-B	3'x3' 1,000 x .2 lb. Carbon Steel	[Call]
C5F-R3400-C	3'x3' 2,500 x .5 lb. Carbon Steel	[Call]
C5F-R3400-D	4'x4' 2,500 x .5 lb. Carbon Steel	[Call]
C5F-R3400-F	4'x4' 5,000 x 1 lb. Carbon Steel	[Call]
C5F-R3400-I	4'x4' 10,000 x 2 lb. Carbon Steel	[Call]
C5F-R3400-O	4'x5' 5,000 x 1 lb. Carbon Steel	[Call]
C5F-R3400-P	4'x5' 10,000 x 2 lb. Carbon Steel	[Call]
C5F-R3400-Q	4'x6' 5,000 x 1 lb. Carbon Steel	[Call]
C5F-R3400-R	4'x6' 10,000 x 2 lb. Carbon Steel	[Call]
C5F-R3400-G	5'x5' 5,000 x 1 lb. Carbon Steel	[Call]
C5F-R3400-J	5'x5' 10,000 x 2 lb. Carbon Steel	[Call]
C5F-R3400-H	5'x7' 5,000 x 1 lb. Carbon Steel	[Call]
C5F-R3400-K	5'x7' 10,000 x 2 lb. Carbon Steel	[Call]

Eclipse™ Battpak™ Series Battery Powered Bench Scales

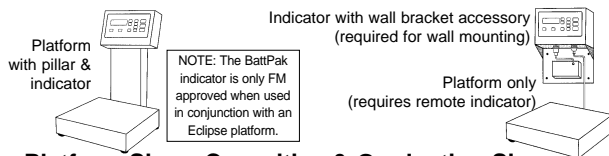


Fairbanks' most versatile battery operated, all around safe bench scale with extreme load cell protection.

Specifications:

- Display**0.75" six digit, liquid crystal display
- Filtering**4 levels for vibration suppression
- Controls**Auto tare, gross/net, units and zero
- Units**lb., kg., oz., gm., front panel selectable
- Overload**500% of scale capacity; 200% of scale capacity on 500 & 1,000 lb. models
- Power Requirements** ...7 volt rechargeable nicad battery pack (removable), 50 hours continuous operation. 200 hours if batter save mode enacted.
- Accessories**Direct power supply; Cuttin gboard for 10" x 10" models only; Wheel kit accessory for 24" x 24" models only
- FM Approval**Factory Mutual Approved for All Groups, Classes and Divisions

The Eclipse BattPak arrives at your location pre-calibrated & easy to use.



Platform Sizes, Capacities & Graduation Sizes

Pillar Mount	Wall Mount	Description	Price/Ea.
15119	18524	10x10 6# / 2.72 kg.	[Call]
15120	18534	10x10 12# / 5.45 kg.	[Call]
15121	18535	10x10 24# / 10.9 kg.	[Call]
15124	18536	12x14 40# / 18.18 kg.	[Call]
15125	18530	12x14 60# / 27.2 kg.	[Call]
15126	18531	16x18 100# / 45.45 kg.	[Call]
15127	18532	16x18 200# / 90.9 kg.	[Call]
14618	50-200 Hour Battery Charger		[Call]
14692	Safe Area Recharger		[Call]

Fairbanks General and Special Purpose Industrial Duty Scales

Sigma™ Series Counting Scales • Basic Model DX • Enhanced Model EX

Fairbanks' Sigma Series are accurate, dependable counting scales designed to withstand tough use in general industrial applications.

SIGMA DX Series

The Sigma DX Series features a simple display which has been designed for easy operation of basic counting functions such as auto tare, unit weight selection, gross/net and preset sample size selection.



DX Model

SIGMA EX Series

The Sigma EX Series provides a full line of options and versions based on your needs. Counting functions include stored tare, unit weight selection, programmable sample size selection and piece/activity accumulation.

Easy To Use

The large, dual displays are easy read, with audio and visual feedback and intuitive operation. The AC powered units feature vacuum fluorescent displays, while the battery-powered models use liquid crystal displays.



EX Model

Above: The Sigma DX Series (right) and the Sigma EX Series (left) models offer keypad configurations based on user needs, as well as multiple pan sizes.

Please Select A Capacity Below:

Capacities	Style A	10 lbs. x 0.001 lb. (5000 g x 0.5 g)
	Style B	25 lbs. x 0.002 lb. (10 kg. x 0.001 kg.)
	Style C	50 lbs. x 0.005 lb. (25 kg. x 0.002 kg.)
	Style D	100 lbs. x 0.01 lb. (50 kg. x 0.005 kg.)

The scale operations are fast and effective, with one-key sampling and simple on-board operations. The Sigma EX models also use the Auto-Accumulate piece/activity/limit value feature for kitting applications.

Accurate

Accurate samples are ensured with the Fairbanks exclusive AutoIntegrate™ sample update feature. And when combined with our high resolution sample scales, the accuracy is up to 0.0001 lb. countable weight.

Battery Powered Models Available

You can get up to 800 hours of continuous battery life from just six D-cell batteries, which are included with the scale. An AC adapter is also included for extra versatility.

Please Select AC or Battery Power:

DX/AC	Style 9800
DX/Battery	Style 9700
EX/AC	Style 9850
EX/Battery	Style 9750

Flexible Output Capabilities with the SIGMA EX Series

The Sigma EX Series Counting Scales can use up to five bi-directional RS232C ports, so you can output data to ticket, label, tape and line printers in standard formats. Each model can also interface with a computer to compile data management reports.

Remote Platform Capabilities

The Sigma EX models can connect to a Fairbanks floor, bench or high resolutions Aegis sample scales for remote bulk counting.



Width: 11" • Height: 4 1/4" • Length: 15"

Platform Dimensions:

10 lb. models: 10" x 10"
25 lb., 50 lb., & 100 lb. models: 11" x 13"
The drawing shows an 11" x 13" pan.

Please Select A Capacity Below:

Capacities	Style A	10 lbs. x 0.001 lb. (5000 g x 0.5 g)
	Style B	25 lbs. x 0.002 lb. (10 kg. x 0.001 kg.)
	Style C	50 lbs. x 0.005 lb. (25 kg. x 0.002 kg.)
	Style D	100 lbs. x 0.01 lb. (50 kg. x 0.005 kg.)

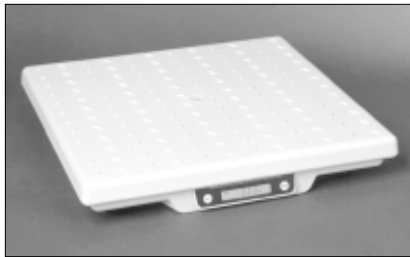
Please Select AC or Battery Power:

DX/AC	Style 9800
DX/Battery	Style 9700
EX/AC	Style 9850
EX/Battery	Style 9750

SIGMA Series Scales - PRICING

All DX Models	Call for price
All EX Models	Call for price

Ultegra™ Series General Purpose Bench Scale • Compatible with UPS Software • Improved Design



Fairbanks' Ultegra Series General Purpose Bench Scales are rugged and reliable. These low profile scales can be used in a variety of non-washdown applications up to 150 lbs. and feature Fairbanks' exclusive Intalogix™ Technology, offering higher accuracy and resolution.

ULTEGRA Series

The Ultegra Series continuously monitors itself and will alert the operator of any problems with an error message on the display.

Rugged Design

These bench scales are made of a high impact ABS composite material, making it both lightweight and extremely rugged. Built to handle the abuse often found in an industrial environment, these bench scales require very little maintenance.

Accurate

The Ultegra Series provides accuracy to 0.02 lbs. For packages greater than 60 lbs., this bench scale automatically shifts to a division size of 0.05 lbs. So, there's no need to worry about switching readabilities.

Simple To Use

Two key operation (units and zero) is designed for maximum efficiency. Just select a unit of measure, place the object on the scale and read the display. The zero key zeros the scale or allows for filling or checkweighing operations. The

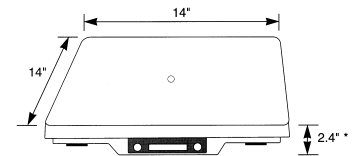
textured weighing surface reduces surface tension and allows boxes to slide easily across the scale. To maximize operator efficiency, a roller top model is also available. An optional remote display with an eight foot cable allows you to place the remote display in a convenient location.

UPS Software Compatible

This bench scale can be used for all your UPS shipping. All you need is a computer and the UPS software.

Specifications

Capacity150 lbs. (67.5 kg)
Platform Size14"x14"x2.4"14"x14"x3.57" (on roller top model)
Division Size0.02 lbs. up to 60 lbs.0.05 lbs. over 60 lbs.
OutputFixed format RS232C(includes 8' cable)
Power Requirements50/60 Hz,115/220 VAC selectable
Primary Display0.25" high LCD
Remote Display0.5" high LCD with 8' cable
AccessoriesRemote Display



Dimensions

*With roller top, the height

Remote Read-Out Option

of the scale is 3.57"

Ball Transfer Top Option



ULTEGRA Bench Scales

Model 15824	14"x14" - 150 lb. cap. Price/ea.: [Call]
Model 18322	14"x14" - 150 lb. cap. w/ball transfer conveyor Price/ea.: [Call]
Model 15851	Remote display w/ 8' cable Price/ea.: [Call]

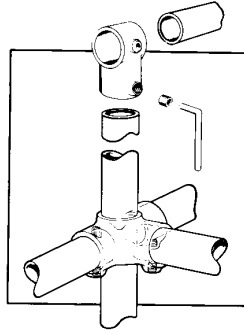
BUILD STRONG RIGID STRUCTURES WITH

KEE KLAMPS & PIPE

- ONE OF THE QUICKEST WAYS TO ASSEMBLE STRUCTURAL PIPE WORK
- CUT LABOR COSTS UP TO 70%
- 100% REUSABLE
- NO WELDING OR THREADING
- NO DRILLING OR BOLTING

Kee Klamps are strong malleable iron slip-on pipe fittings with from one to five case hardened set screws to each fitting depending on the number of pipes to be joined at one point.

Kee Klamps are designed to be used with standard iron (1/2" to 2") pipe available from any local plumbing or mill supply house.



KEE KLAMPS CONFORM TO AASTM A47 GRADE 32510

Orders over \$750.00 Less 5%
over \$1200.00 Less 8%

STANDARD PIPE DIMENSIONS (SCHEDULE 40)

KEE KLAMPS WILL ALSO FIT EXTRA HEAVY PIPE AND CORRESPONDING TUBE SIZES

SPLIT FITTINGS

Designed to give a 90 degree butt joint between two pipes, pipe must not be joined within the fitting.
A 10 - 7 (1 1/4") [Call]
A 10 - 8 (1 1/2") [Call]

Designed to give a 90 degree crossover joint, pipe should not be joined within the fitting.
A 45 - 7 (1 1/4") [Call]
A 45 - 8 (1 1/2") [Call]

NO. 10 SINGLE SOCKET TEE						
Type	Wgt. Lbs.	Pipe Size I.D. (in inches)				Price
		A	B	C	D	
10-4	.26	1/2	1/2			Call
10-5	.35	3/4	3/4			for price
10-6	.66	1	1			
10-6S	.53	1	3/4			
10-6T	.71	1	1 1/4			
10-7	.88	1 1/4	1 1/4			
10-7S	.66	1 1/4	3/4			
10-7T	.93	1 1/4	1			
10-78	1.10	1 1/4	1 1/2			
10-8	1.17	1 1/2	1 1/2			
10-8T	1.10	1 1/2	1 1/4			
10-9	1.94	2	2			
10-98	1.63	2	1 1/2			

NO. 62 RAILING STANDARD FLANGE						
Type	Wgt. Lbs.	Pipe Size I.D. (in inches)				Price
		A	B	C	D	
62-5	1.37	3/4	7/16			Call
62-6	1.79	1	3/8			for price
62-7	2.16	1 1/4	3/8			
62-8	3.02	1 1/2	3/8			
62-9	4.01	2	1 1/8			
			Di. of Fixing Hole			

NO. 14 STRAIGHT COUPLING						
Type	Wgt. Lbs.	Pipe Size I.D. (in inches)				Price
		A	B	C	D	
14-4	.29	1/2				for price
14-5	.64	3/4				
14-6	.82	1				
14-7	1.21	1 1/4				
14-8	1.41	1 1/2				
14-9	2.03	2				

NO. 61 FLANGE						
Type	Wgt. Lbs.	Pipe Size I.D. (in inches)				Price
		A	B	C	D	
61-4	.46	1/2	1/4			Call
61-5	.79	3/4	1/4			for price
61-6	.86	1	1/4			
61-7	1.01	1 1/4	1/4			
61-8	1.79	1 1/2	1/4			
61-9	2.21	2	1/4			

NO. 15 90° ELBOW						
Type	Wgt. Lbs.	Pipe Size I.D. (in inches)				Price
		A	B	C	D	
15-4	.26	1/2	1/2			Call
15-5	.51	3/4	3/4			for price
15-6	.82	1	1			
15-7	1.48	1 1/4	1 1/4			
15-8	1.92	1 1/2	1 1/2			
15-9	2.65	2	2			

NO. 25 90° THREE SOCKET TEE						
Type	Wgt. Lbs.	Pipe Size I.D. (in inches)				Price
		A	B	C	D	
25-4	.53	1/2	1/2	1/2		Call
25-5	.68	3/4	3/4	3/4		for price
25-6	.99	1	1	1		
25-7	1.98	1 1/4	1 1/4	1 1/4		
25-8	2.32	1 1/2	1 1/2	1 1/2		
25-9	3.48	2	2	2		

NO. C-58 Swivel Flange for floors, walls, ceiling, roofs, etc. Also for bracing. See below.

NO. 19 Adjustable side outlet tee for railings, angles, frames, etc. See below.

NO. 19 ADJUSTABLE SIDE OUTLET TEE						
Type	Wgt. Lbs.	Pipe Size I.D. (in inches)				Price
		A	B	C	D	
19-5	.93	3/4	3/4	3/4		Call
19-6	1.25	1	1	1		for price
19-7	1.81	1 1/4	1 1/4	1 1/4		
19-8	2.60	1 1/2	1 1/2	1 1/2		
19-9	3.00	2	2	2		

NO. 35 SIDE OUTLET TEE						
Type	Wgt. Lbs.	Pipe Size I.D. (in inches)				Price
		A	B	C	D	
35-4	.46	1/2	1/2	1/2	1/2	Call
35-5	.86	3/4	3/4	3/4	3/4	for price
35-6	1.01	1	1	1	1	
35-7	1.70	1 1/4	1 1/4	1 1/4	1 1/4	
35-8	2.27	1 1/2	1 1/2	1 1/2	1 1/2	
35-9	3.13	2	2	2	2	

NO. 45 CROSSOVER						
Type	Wgt. Lbs.	Pipe Size I.D. (in inches)				Price
		A	B	C	D	
45-4	.22	1/2	1/2			Call
45-5	.44	3/4	3/4			for price
45-6	.64	1	1			
45-6S	.71	1	3/4			
45-7	.97	1 1/4	1 1/4			
45-76	.79	1 1/4	1			
45-8	1.15	1 1/2	1 1/2			
45-86	.95	1 1/2	1			
45-8T	1.01	1 1/2	1 1/4			
45-9	2.09	2	2			
45-98	1.98	2	1 1/2			

NO. 20 SIDE OUTLET ELBOW						
Type	Wgt. Lbs.	Pipe Size I.D. (in inches)				Price
		A	B	C	D	
20-4	.49	1/2	1/2	1/2		Call
20-5	.82	3/4	3/4	3/4		for price
20-6	1.10	1	1	1		
20-7	1.87	1 1/4	1 1/4	1 1/4		
20-8	1.98	1 1/2	1 1/2	1 1/2		
20-9	2.20	2	2	2		

NO. C50 SINGLE SWIVEL SOCKET						
Type	Wgt. Lbs.	Pipe Size I.D. (in inches)				Price
		A	B	C	D	
C50-44	.77	1/2	1/2		9/32	Call
C50-55	1.26	3/4	3/4		3/8	for price
C50-66	1.35	1	1		3/8	
C50-77	1.61	1 1/4	1 1/4		3/8	
C50-88	2.00	1 1/2	1 1/2		3/8	
C50-99	2.78	2	2		3/8	

NO. 46 COMBINATION SOCKET TEE AND CROSSOVER						
Type	Wgt. Lbs.	Pipe Size I.D. (in inches)				Price
		A	B	C	D	
46-4	.35	1/2	1/2	1/2		Call
46-5	.60	3/4	3/4	3/4		for price
46-6	.82	1	1	1		
46-7	1.46	1 1/4	1 1/4	1 1/4		
46-8	1.76	1 1/2	1 1/2	1 1/2		
46-9	2.87	2	2	2		

NO. 21 90° SIDE OUTLET TEE						
Type	Wgt. Lbs.	Pipe Size I.D. (in inches)				Price
		A	B	C	D	
21-4	.35	1/2	1/2	1/2		Call
21-5	.53	3/4	3/4	3/4		for price
21-6	.82	1	1	1		
21-7	1.21	1 1/4	1 1/4	1 1/4		
21-8	1.54	1 1/2	1 1/2	1 1/2		
21-9	2.65	2	2	2		

NO. 26 TWO SOCKET CROSS						
Type	Wgt. Lbs.	Pipe Size I.D. (in inches)				Price
		A	B	C	D	
26-4	.40	1/2	1/2	1/2		call
26-5	.55	3/4	3/4	3/4		for price
26-6	.82	1	1	1		
26-7	1.26	1 1/4	1 1/4	1 1/4		
26-8	1.92	1 1/2	1 1/2	1 1/2		
26-8T	2.05	1 1/2	1 1/4	1 1/4		
26-9	2.50	2	2	2		

NO. C58 SWIVEL FLANGE						
Type	Wgt. Lbs.	Pipe Size I.D. (in inches)				Price
		A	B	C	D	
C58-5	1.66	3/4	7/16		3/8	Call
C58-6	1.72	1	7/16		3/8	for price
C58-7	1.92	1 1/4	7/16		3/8	
C58-8	2.00	1 1/2	7/16		3/8	
C58-9	2.81	2	7/16		3/8	

NOTE: Parts #10, 15, 20, 21, 26, 35 and 61 are also available in colors: white, red, blue, and black in sizes #6 and #7 only. Add 33% (1/3) to all prices for color.

Many other fittings are available. Call with your request.

Additional Useful KEE KLAMP Fittings From TT

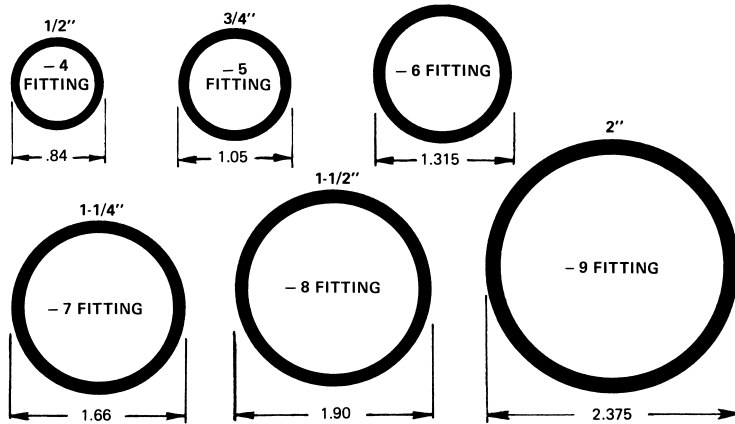
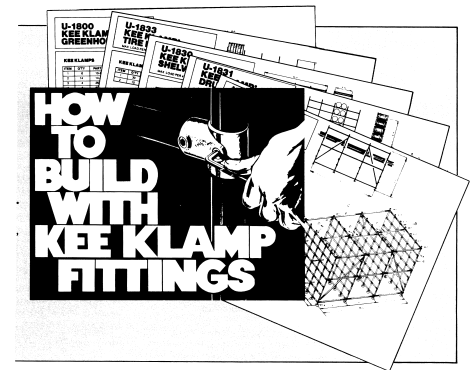
Standard Pipe Dimensions (Schedule 40)

KEE KLAMP fittings will also fit extra heavy pipe and corresponding tube sizes.

KEE Klamp Size Ref. No.	-4	-5	-6	-7	-8	-9
Nominal Pipe Size	1/2"	3/4"	1"	1 1/4"	1 1/2"	2"
Tube Size O.D. (not Schedule 40)	27/32"	1"	1 5/16"	1 5/8"	1 7/8"	2 3/8"
Pipe O.D.	.84	1.05	1.315	1.66	1.90	2.375
KEE Klamp I.D.	.87	1.09	1.375	1.72	1.94	2.410

Send for brochure. "How to Build with KEE KLAMP Fittings"

Call, fax or e-mail to Ted Thorsen Co.



NO. 35 SIDE OUTLET TEE

Type	Wgt. Lbs.	Nom. Pipe Size I.D.				Price Each
		A	B	C	D	
35-4	.46	1/2"	1/2"	1/2"	1/2"	Call
35-5	.86	3/4"	3/4"	3/4"	3/4"	for price
35-6	1.01	1"	1"	1"	1"	
35-7	1.70	1 1/4"	1 1/4"	1 1/4"	1 1/4"	
35-8	2.27	1 1/2"	1 1/2"	1 1/2"	1 1/2"	
35-9	3.13	2"	2"	2"	2"	

NO. 17 CLAMP-ON CROSSOVER

Type	Wgt. Lbs.	Nom. Pipe Size I.D.				Price Each
		A	B	C	D	
17-5	.40	3/4"	3/4"			Call for price
17-6	.44	1"	1"			
17-6S	.42	1"	3/4"			
17-7	.95	1 1/4"	1 1/4"			
17-7S	1.02	1 1/4"	1 1/2"			
17-8	1.19	1 1/2"	1 1/2"			
17-9	1.76	2"	2"			

NO. 66 GROUND SOCKET

Type	Wgt. Lbs.	Nom. Pipe Size I.D.				Price Each
		A	B	C	D	
66-6	4.41	1"				Call for price
66-7	5.07	1 1/4"				
66-8	5.51	1 1/2"				

NO. 62 RAILING STANDARD FLANGE

Type	Wgt. Lbs.	Nom. Pipe Size I.D.				Price Each
		A	B	C	D	
62-5	1.37	3/4"	7/16"			Call for price
62-6	1.79	1"	9/16"			
62-7	2.16	1 1/4"	9/16"			
62-8	3.02	1 1/2"	9/16"			
62-9	4.01	2"	11/16"			

NO. C51 DOUBLE SWIVEL SOCKET

Type	Wgt. Lbs.	Nom. Pipe Size I.D.				Price Each
		A	B	C	D	
C51-555	2.16	3/4"	3/4"	3/4"	3/8"	Call for price
C51-666	2.38	1"	1"	1"	1"	
C51-777	2.84	1 1/4"	1 1/4"	1 1/4"	3/8"	
C51-888	3.50	1 1/2"	1 1/2"	1 1/2"	3/8"	
C51-999	4.72	2"	2"	2"		

NO. 30 30° - 45° ADJUSTABLE CROSS

Type	Wgt. Lbs.	Nom. Pipe Size I.D.				Price Each
		A	B	C	D	
30-6	1.76	1"	1"	1"		Call for price
30-7	2.21	1 1/4"	1 1/4"	1 1/4"		
30-8	2.76	1 1/2"	1 1/2"	1 1/2"		

Type 30 is adjustable between angles of 30° and 45° from the horizontal.

NO. 64 RAILING STANDARD SUPPORT, VERTICAL BASE

Type	Wgt. Lbs.	Nom. Pipe Size I.D.				Price Each
		A	B	C	D	
64-6	1.83	1"	9/16"			Call for price
64-7	2.27	1 1/4"	9/16"			
64-8	3.20	1 1/2"	9/16"			

NO. C52 CORNER SWIVEL SOCKET

Type	Wgt. Lbs.	Nom. Pipe Size I.D.				Price Each
		A	B	C	D	
C52-555	2.12	3/4"	3/4"	3/4"	3/8"	Call for price
C52-666	2.34	1"	1"	1"	3/8"	
C52-777	2.84	1 1/4"	1 1/4"	1 1/4"	3/8"	
C52-888	3.52	1 1/2"	1 1/2"	1 1/2"	3/8"	

NO. 16 CLAMP-ON TEE

Type	Wgt. Lbs.	Nom. Pipe Size I.D.				Price Each
		A	B	C	D	
16-5	.66	3/4"	3/4"			Call for price
16-6	.82	1"	1"			
16-7	1.10	1 1/4"	1 1/4"			
16-8	1.72	1 1/2"	1 1/2"			
16-9	2.03	2"	2"			

NO. 40 FOUR SOCKET CROSS

Type	Wgt. Lbs.	Nom. Pipe Size I.D.				Price Each
		A	B	C	D	
40-5	.93	3/4"	3/4"	3/4"	3/4"	Call for price
40-6	1.23	1"	1"	1"	1"	
40-7	2.05	1 1/4"	1 1/4"	1 1/4"	1 1/4"	
40-8	2.69	1 1/2"	1 1/2"	1 1/2"	1 1/2"	
40-9	4.50	2"	2"	2"	2"	

NO. 29 30° - 60° SINGLE SOCKET TEE

Type	Wgt. Lbs.	Nom. Pipe Size I.D.				Price Each
		A	B	C	D	
29-6	.95	1"	1"			Call for price
29-7	1.59	1 1/4"	1 1/4"			
29-8	1.76	1 1/2"	1 1/2"			

NO. 84 PLUG (DRIVE-IN FIT) MALLEABLE

Type	Wgt. Lbs.	Nom. Pipe Size I.D.				Price Each
		A	B	C	D	
84-5	.26	3/4"				Call for price
84-6	.35	1"				
84-7	.40	1 1/4"				
84-8	.46	1 1/2"				
84-9	.6	2"				